

Danny Janovec

Assignment 2: Broken Object

Objects of broken object:

1. Missing handle on dresser, reshape into a different form.
 - a. What form?
 - b. Measurements

Measurements:

1. Measuring the matching handles that were left on the dresser I discovered the handles were $3\frac{1}{2}$ " in diameter.
2. The screw was $\frac{1}{4}$ "



Danny Janovec

Assignment 2: Broken Object

Form:

1.) Dragon?



2.) Human Face?

Danny Janovec
Assignment 2: Broken Object



Juino Jacquet designed these faces out of toilet paper rolls

Debbie Englund makes pots out of faces.

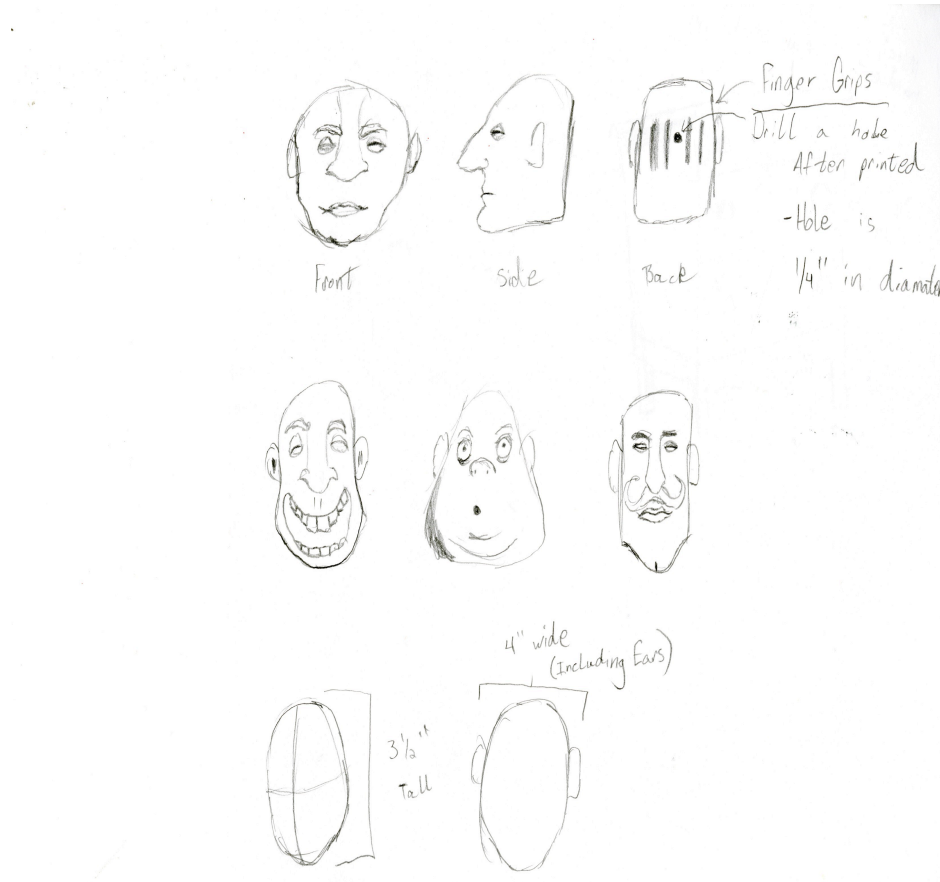
Danny Janovec
Assignment 2: Broken Object



Danny Janovec

Assignment 2: Broken Object

I decided that my form was going to be a face that was exaggerated. My decision was due to the recent project in sculpture. We had to model a self-portrait out of clay.



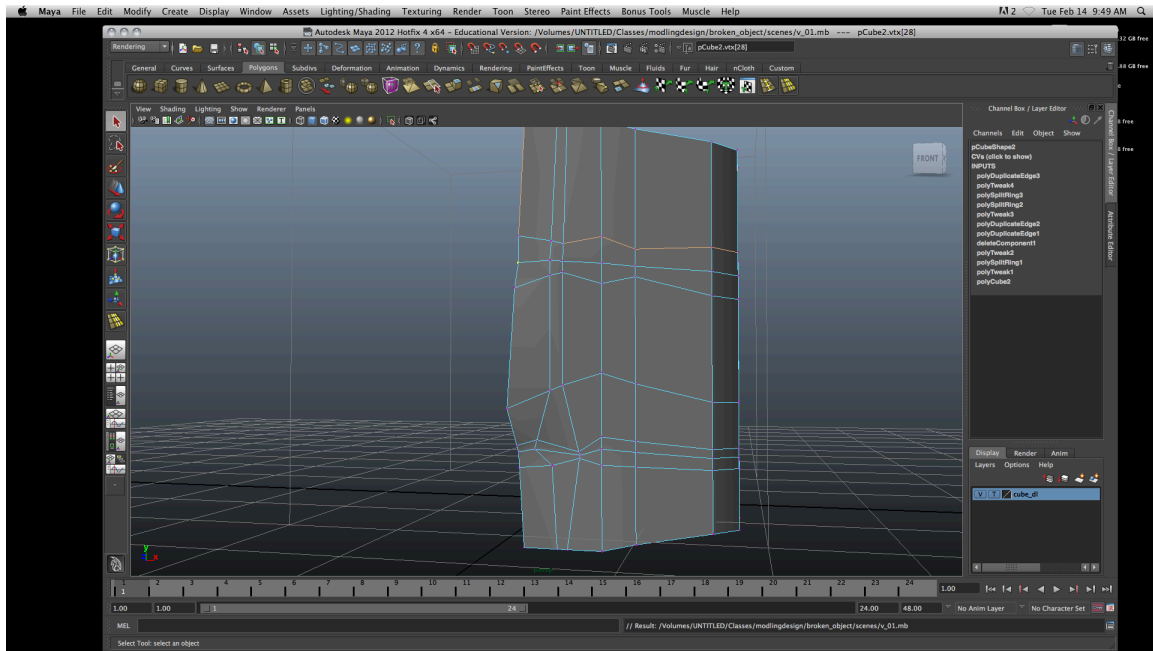
Sketches:

1. I wanted to create a cartoony abstract face
3. To really change the form, I want to include finger grooves in the back of the head, leaving a space in the center to drill. Drilling will allow me to insert the screw left in the dresser.

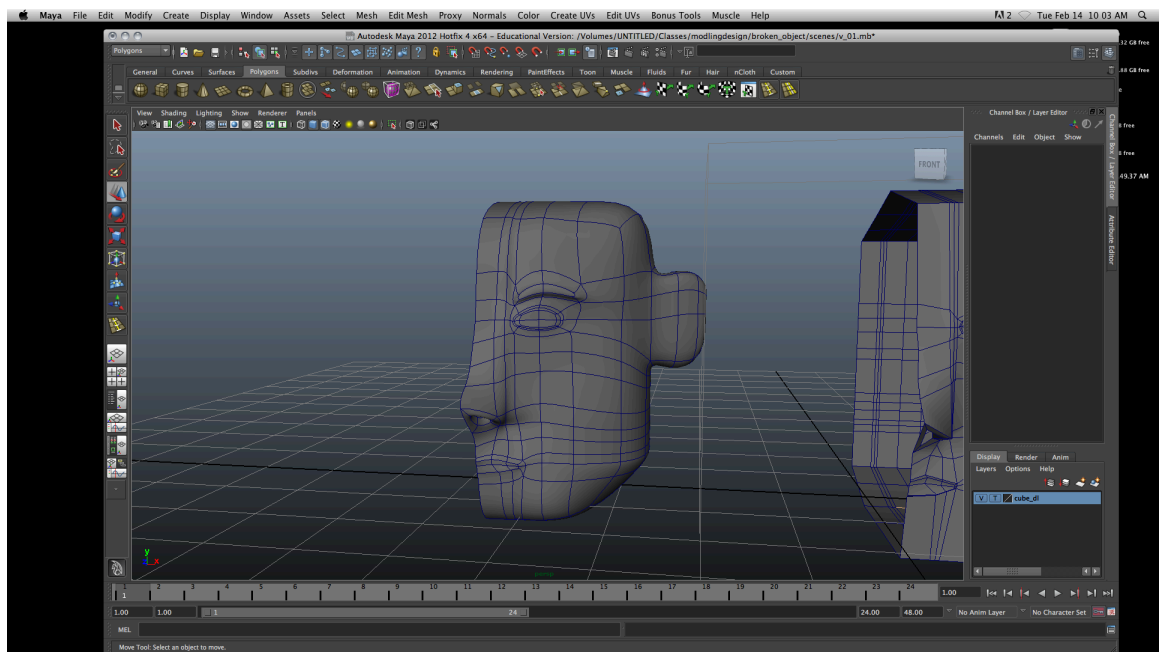
Danny Janovec

Assignment 2: Broken Object

Process:



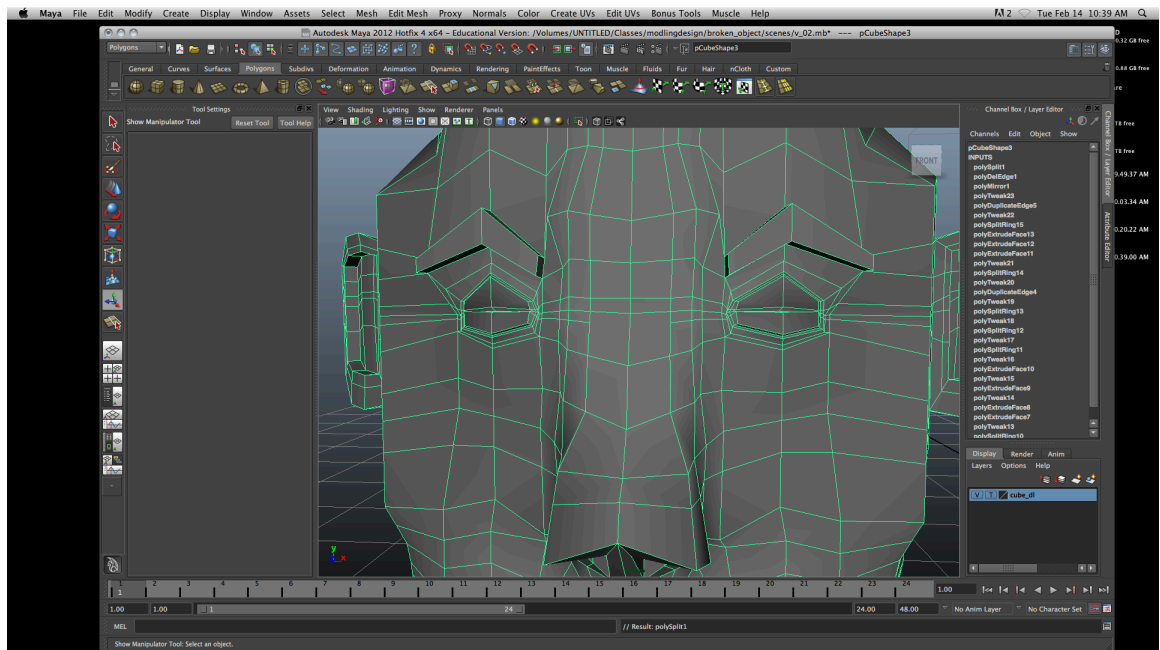
I started off with a basic square primitive. I then started the basic shape of the head, then the nose, mouth, and eyes.



I then did a smooth preview after sculpting out the shapes a little more.

Danny Janovec

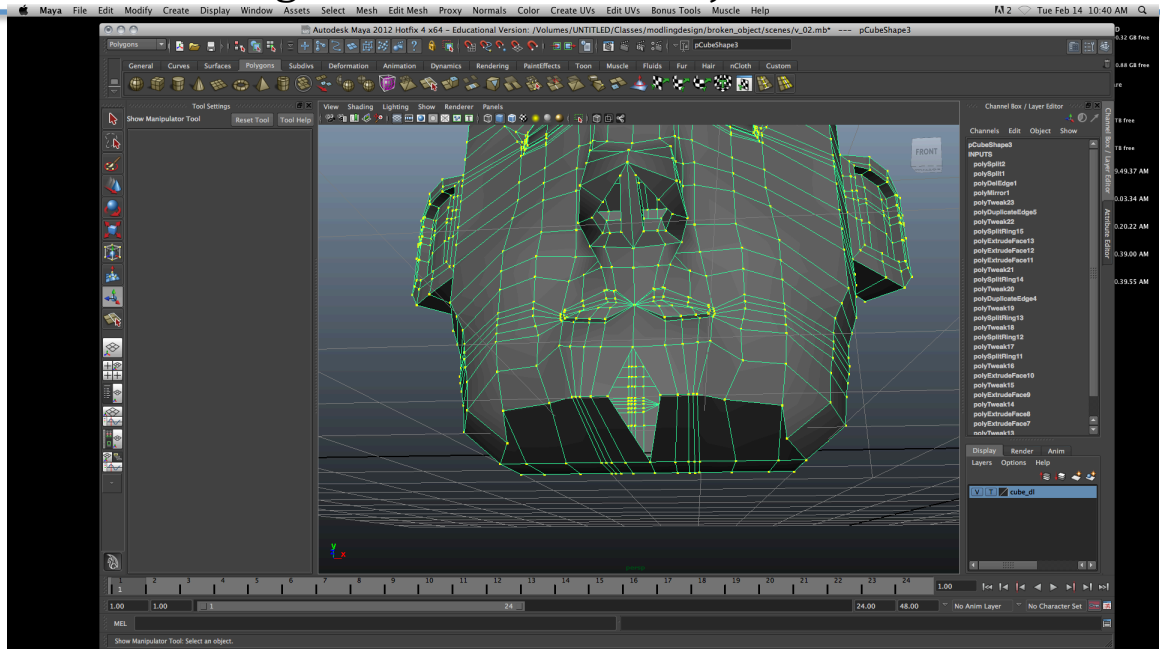
Assignment 2: Broken Object



I mirrored the geometry to have a symmetrical shape.

Danny Janovec

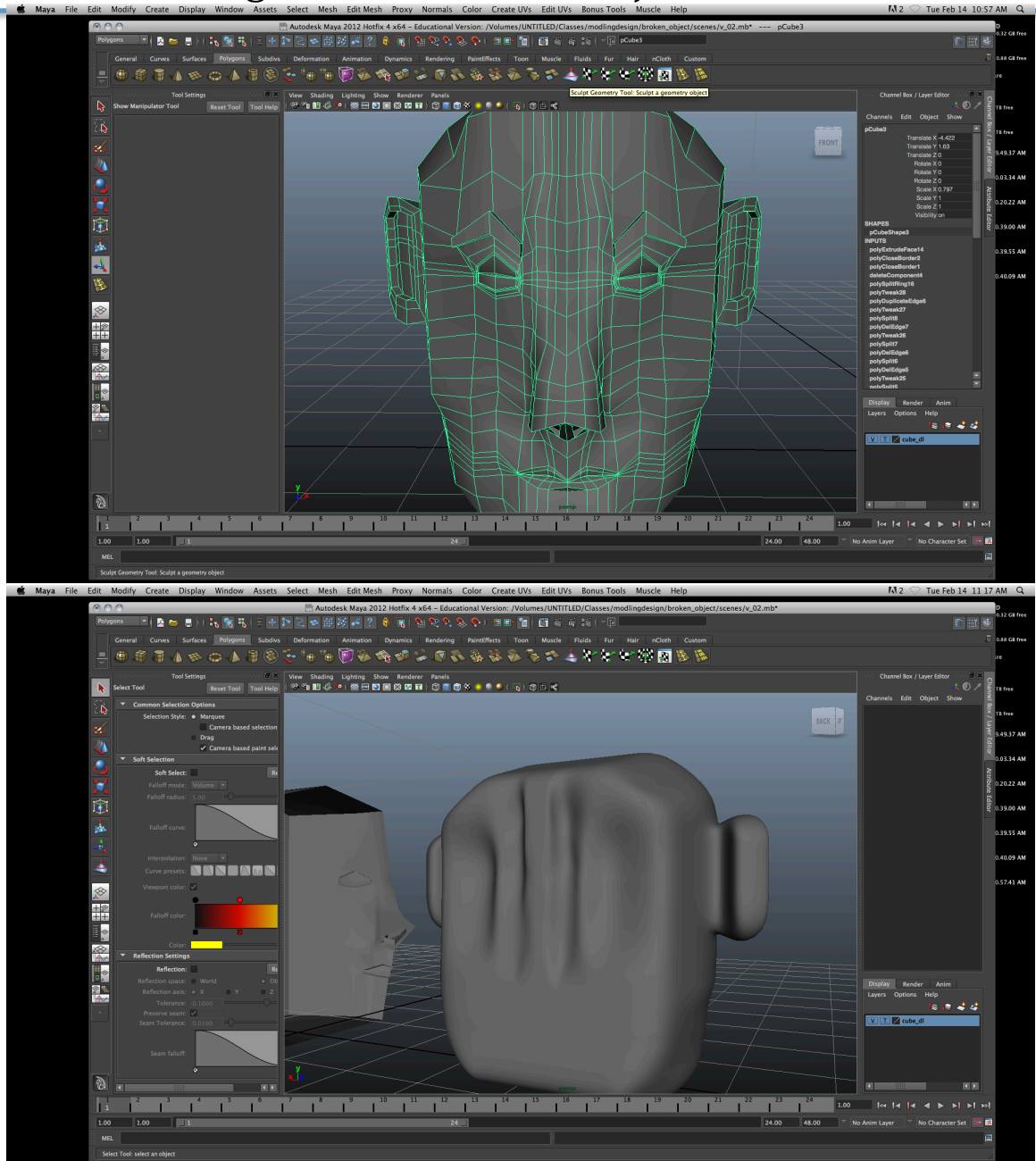
Assignment 2: Broken Object



Reshaping the line flow that distorted from the mirroring of geometry.

Danny Janovec

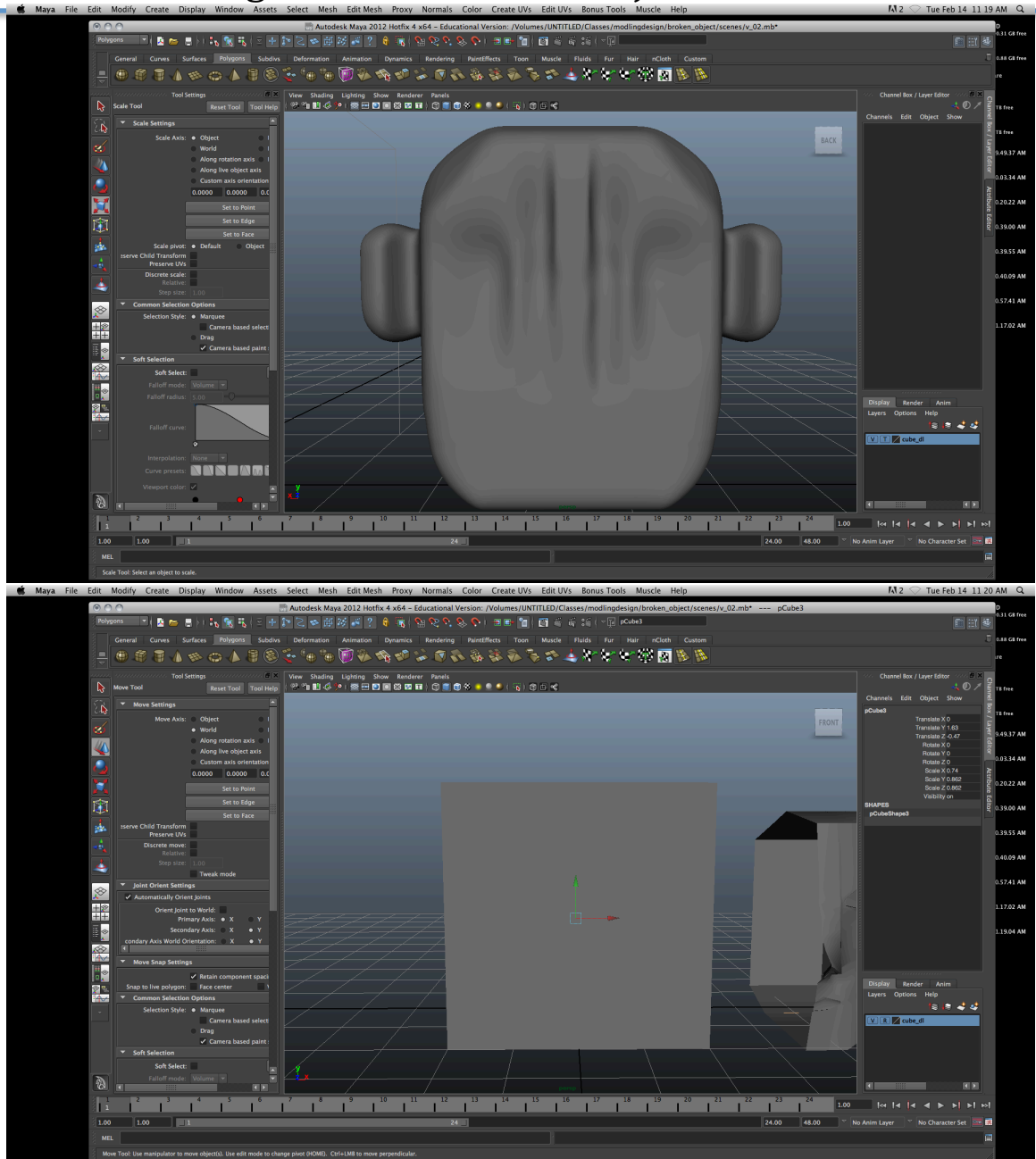
Assignment 2: Broken Object



Inserting the grooves for the fingers, leaving the center flat so the model can be drilled.

Danny Janovec

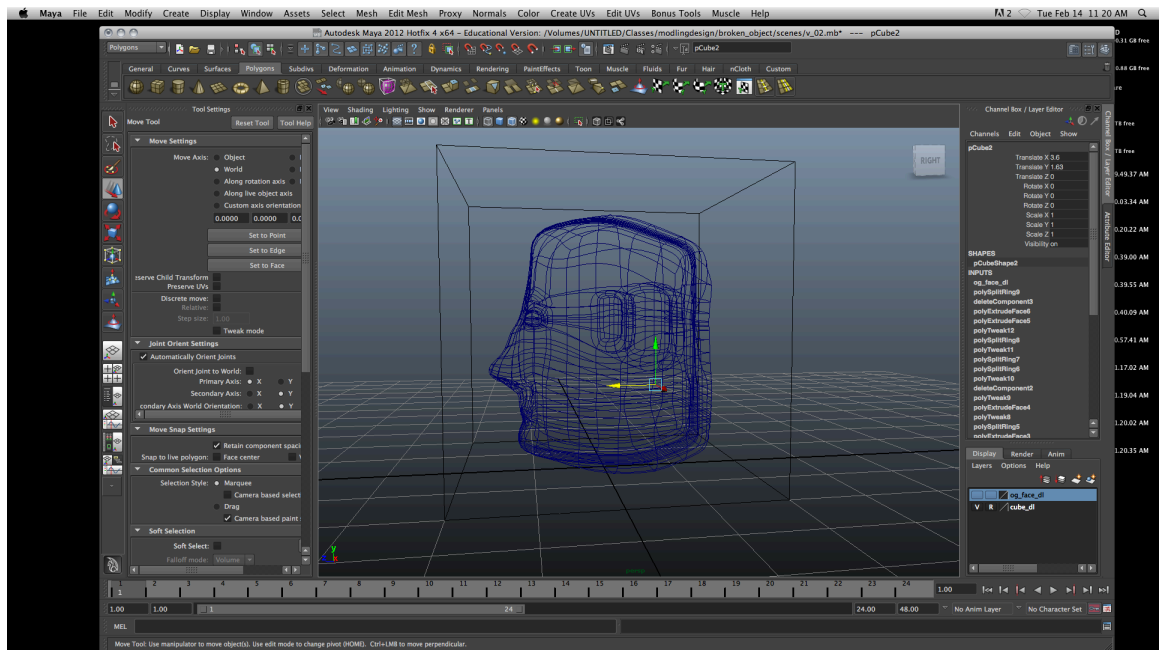
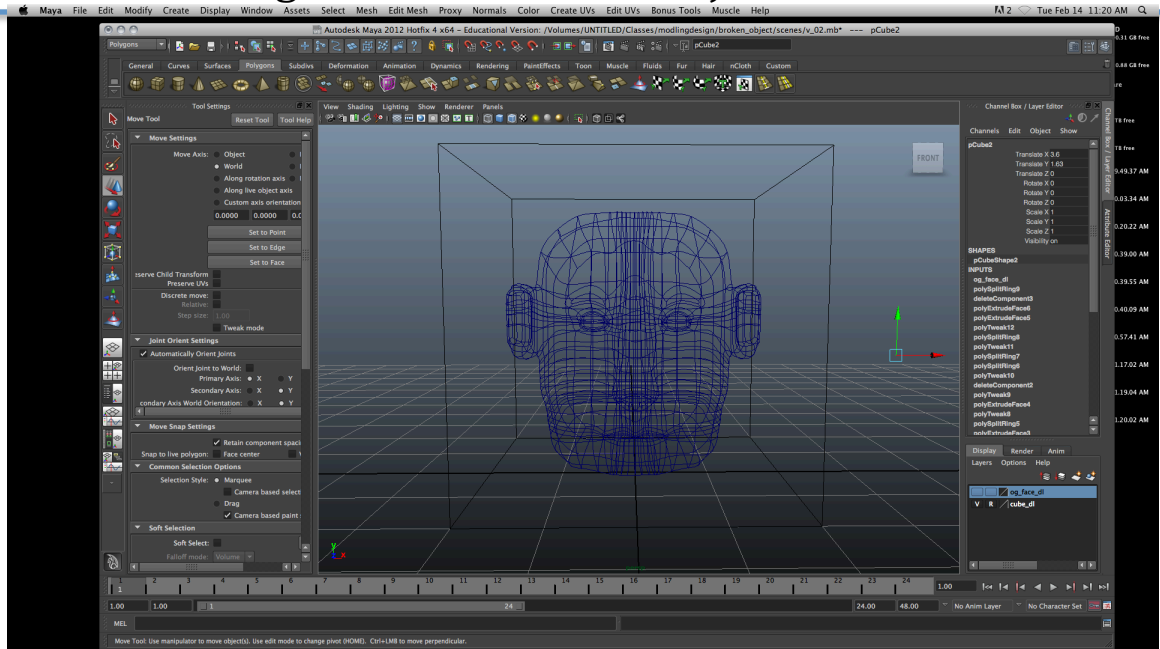
Assignment 2: Broken Object



I then created a box that was 4x4x4. I did this to make sure my object was in the parameters of the printer.

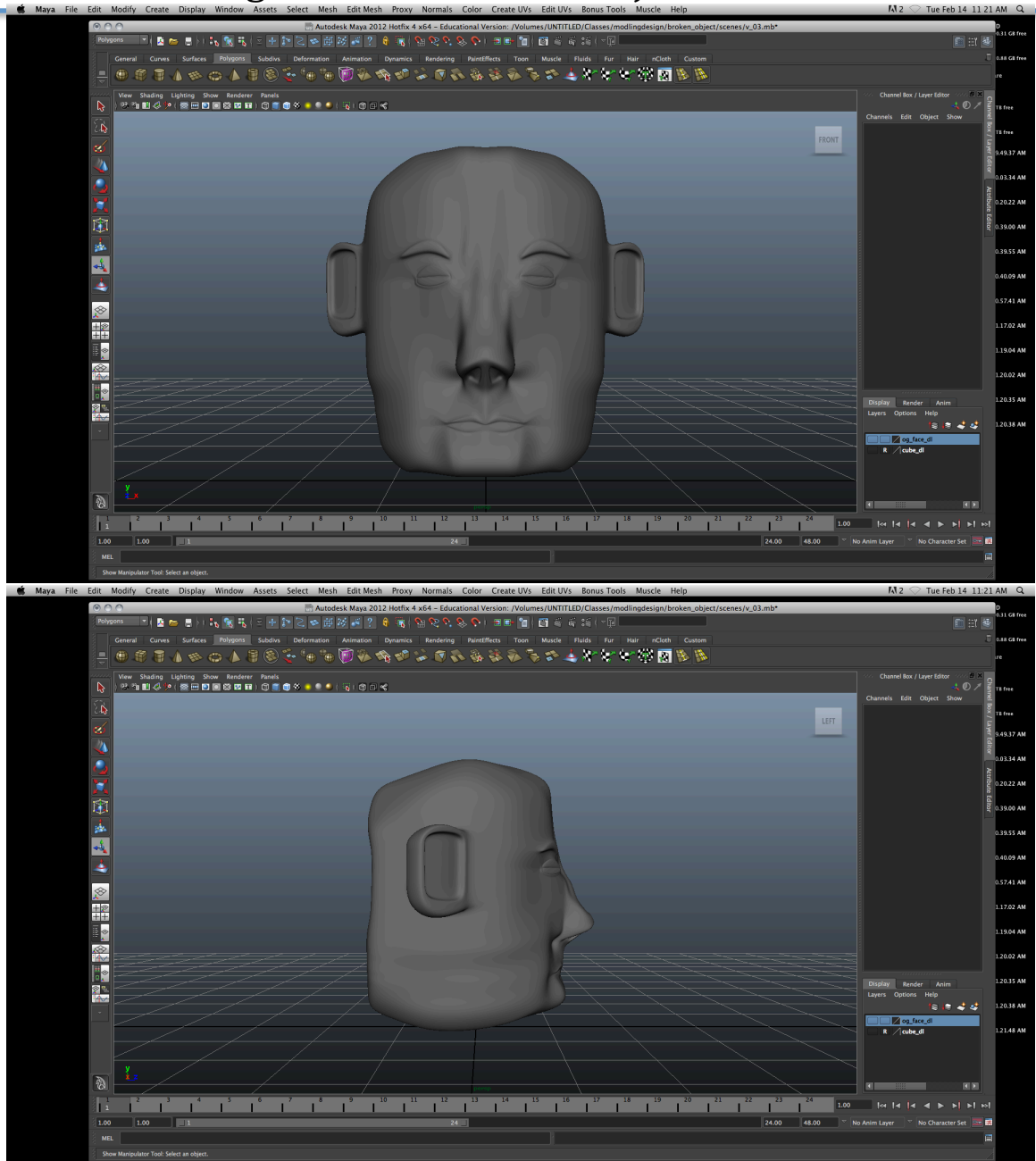
Danny Janovec

Assignment 2: Broken Object



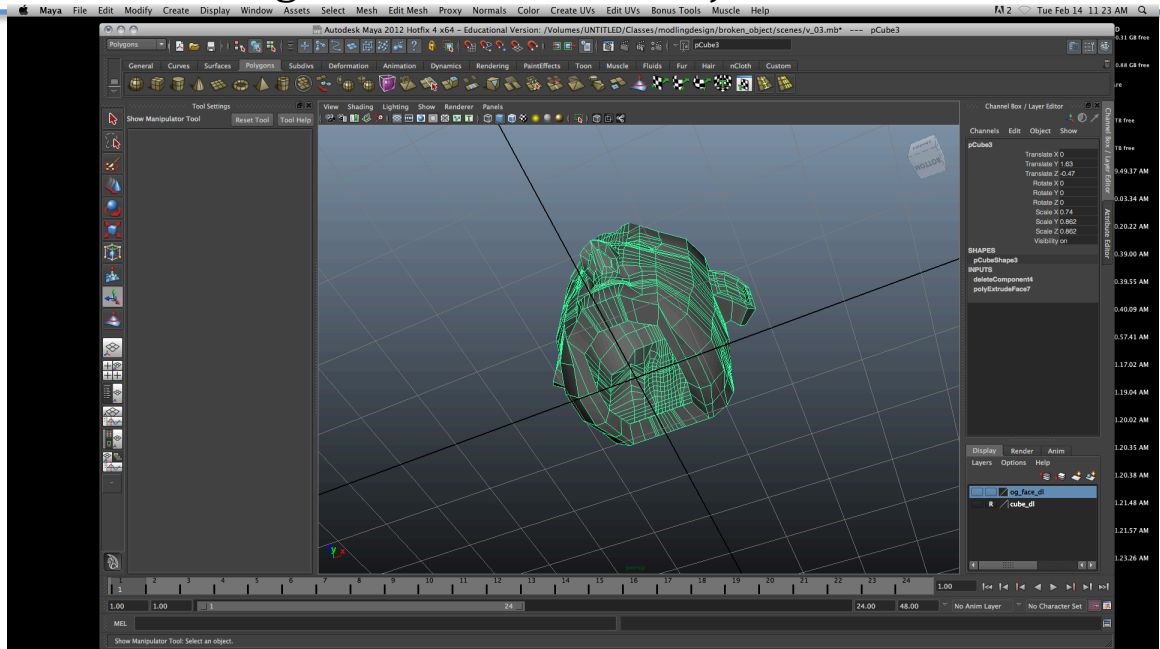
Danny Janovec

Assignment 2: Broken Object

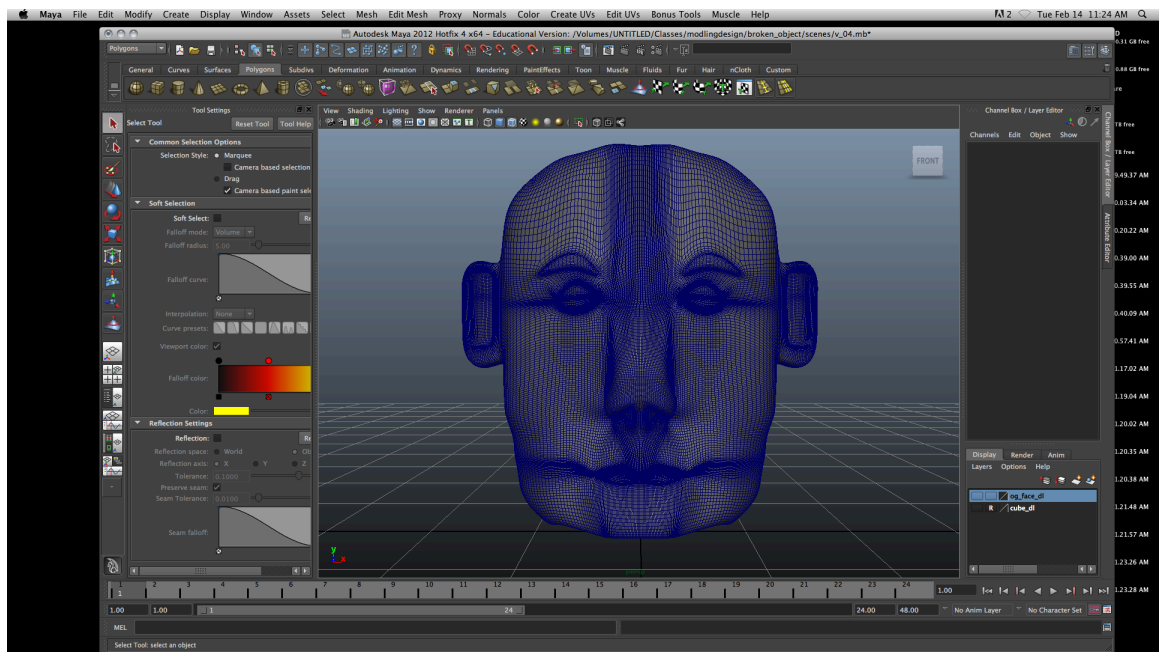


Danny Janovec

Assignment 2: Broken Object

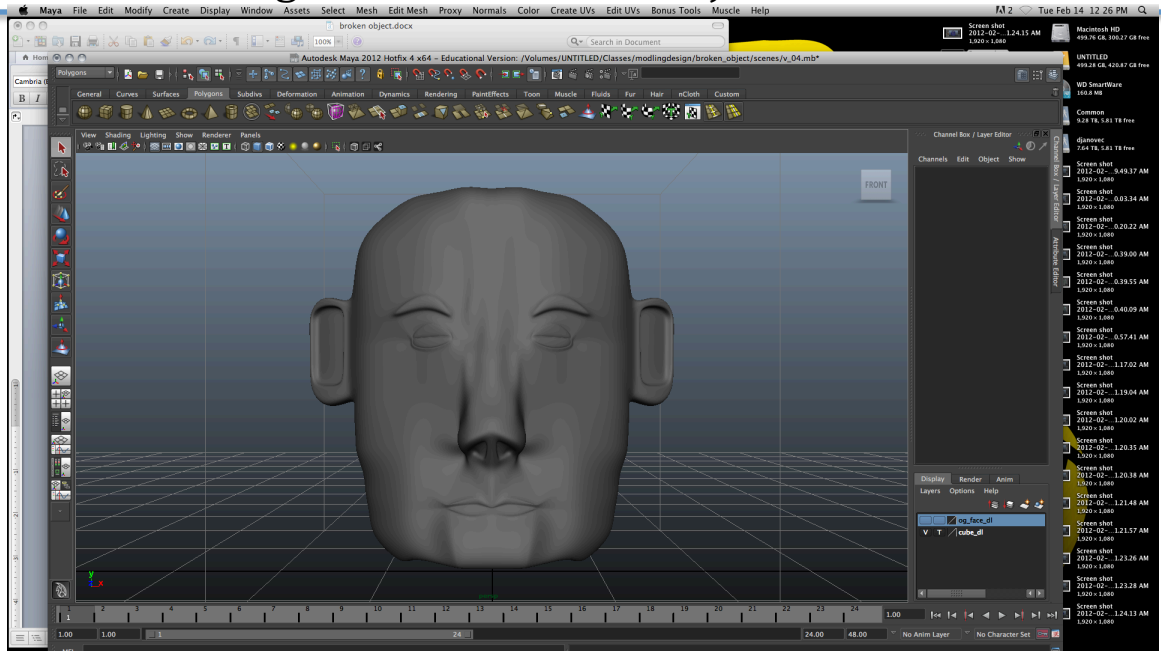


I decided that I did not want to have a full object, just in case the printer read it as that. To fix this problem I deleted the bottom faces that I knew would not really be seen.



Danny Janovec

Assignment 2: Broken Object



Wire frame, and smooth shot of final result.