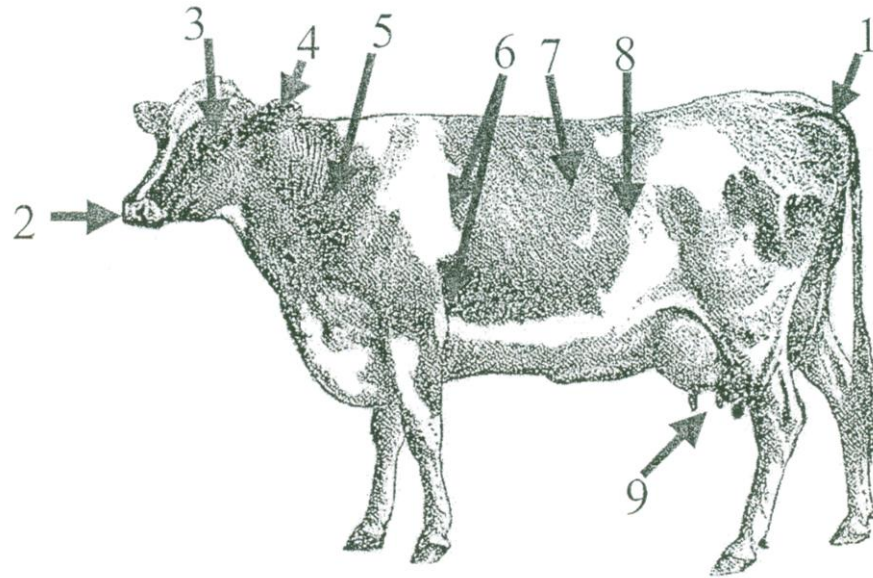
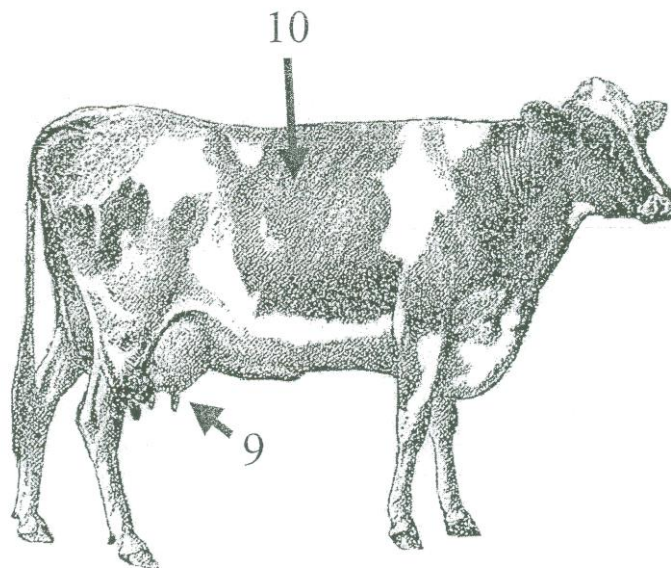




*COW SENSE:
External Anatomy*



1. Urine, discharges, manure temperature
2. Nose, mouth
3. Eyes
4. Ears
5. Skin
6. Heart and lungs
7. DA (LDA)
8. Rumen movement
9. Udder , all 4 quarters
10. RDA



PENNSTATE



College of Agricultural Sciences • Cooperative Extension

***COW SENSE:
Defining the Normal Cow***

Descriptor	Normal	Comments
Behavior	Cows usually stay in a group. They are alert to what is going on around them and are actively curious.	
Eating	Appetites are usually good and most cows come up to the feeder when new feed is offered.	
Comfort	Comfortable cows are usually standing up eating, lying down resting or chewing cuds.	
Stance	Cows usually stand squarely on their front feet and can stand still for long periods of time.	
Heart rate	70 — 80 beats per minute	
Breathing rate	35 — 40 breaths per minute	
Rectal temperature	101.5°F	May be up to 103°F on hot summer days
Rumen movement	2 — 2 1/2 contractions per minute	
Udder	Quarters should be soft and even in size with rear quarters sometimes larger than front.	Teat skin should be soft and free of any sores, scabs, lumps, etc.
Nose	Wet	
Skin pinch	Skin should flatten in no more than 1 to 2 seconds	
Eyes	Clear, no excessive tearing	
Ears	Warm	
Urine color	Pale Yellow	
Urine ketone content	Very low to negative	
Urine pH	Slightly alkaline, approximately 7.4	
Vagina	Discharge normally clear, odorless mucous	
Feces	Should form a pad	



*COW SENSE:
Distance Evaluation & Observation*

	Descriptor	Comments / Questions	Potential Problems
O	Outline	What does the overall appearance of the cow look like, both from the side and from behind (Distended, bloated, tucked up)?	Bloat, LDA, RDA, Hydrops, Indigestion
B	Body Condition	Determination of body condition score (Use handout).	Fat or thin cow syndrome
S	Stance	How the cow walks and holds her legs when standing (Arched back, limping).	Laminitis and other lameness problems, Hardware
E	Eating Behavior	Is the cow interested in eating? How much cud chewing activity?	Any disease problems
R	Respiration	How is the cow breathing (fast, slow, with difficulty)? Any nasal discharges?	Pneumonia, Digestive problems
V	Vaginal Discharge	Identify the presence or absence of discharge from reproductive tract, quality and character.	Metritis, Retained placenta, Dead fetus
E	Ears and Eyes	Are the eyes- bright or dull, and ears- erect or droopy? Evaluates attitude.	Ketosis, Milk fever, Infectious or Toxic diseases
D	Defecation	What does the manure look like? Define color, character, contents, and consistency.	Acidosis, Milk fever, Septic/Toxic, Indigestion



*Cow Sense:
Hands-On Evaluation & Inspection*

	Descriptor	Comments / Questions	Potential Problems
I	Intake	How much feed is being consumed?	Any disease; Feeding Management
N	Nose	Signs of nasal discharge, character, color, quantity.	Pneumonia, Depressed attitude, ADR
S	Skin (Hair coat)	Is the hair coat rough or smooth? Any skin lesions present?	Ketosis, LDA, RDA, Indigestion, Environment
P	Pulse	Determine heart rate and character of beat. Are the jugular veins distended and pulsing?	Milk Fever, Toxic or Septic, Heart Disease, Hardware
E	Eyes	Check for discharges, lesions, and ability to see.	Pneumonia, Pinkeye, Trauma
C	Condition	How does body condition compare to expected? The herd?	High production; Feed problems; Disease
T	Temperature	Determine rectal temperature.	< 100 = Milk fever, > 1,03.5 = Infections, Septic or Toxic
H	Hydration	Determine fluid status - eyes, skin pinch, mouth.	Septic or Toxic diseases, Digestive diseases
E	Eating Behavior	How is she eating? Slug feeding? Sorting the feed? Not interested at all?	Acidosis, Digestive diseases
R	Respiration	Determine breathing rate, quality of lung sounds.	Pneumonia, Bloat, Septic or Toxic diseases

C	CMT	Cow-side Mastitis test, Evaluate udder for heat or cold, swelling, redness, other lesions.	Mastitis
A	Attitude	Mental status of cow - excited, depressed, alert, comatose.	Ketosis, Septic or Toxic, Milk Fever, Listeria, Grass tetany
R	Rumen	Assess rumen activity, gut fill.	LDA, RDA, Acidosis, Indigestion, Hardware
E	Ears	Are the ears warm or cold?	Milk Fever, Septic or Toxic
F	Feces	Evaluate character, content, consistency of feces.	Acidosis, Digestive diseases, Septic or Toxic diseases
U	Urine	Evaluate color, pH, ketone content of urine.	Lepto, Milk Fever, Ketosis
L	Legs	Presence of lesions of hoof or legs.	Footrot, Corns, Heel Wart, Laminitis
L	Lameness	How does the cow move? Obvious limps or nonuse of leg?	Laminitis, Musculoskeletal diseases
Y	Your Records	Record all cow observations and exam findings.	Loss of important health information.

PENNSSTATE



College of Agricultural Sciences • Cooperative Extension