

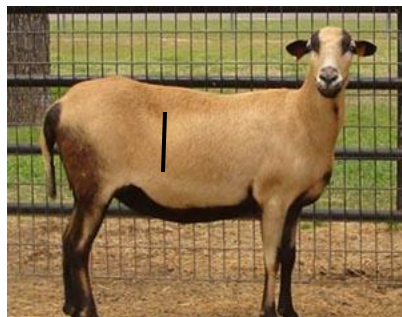
Intra-Op Exploratory Laparotomy

Sterile Prep

Site was cleaned with iodine followed by alcohol, starting from the incision site and moving outwards.

Sx Procedure

Ventral to the transverse process of the lumbar vertebrae a dorsoventral, through-and-through incision was made, about 10cm in length



On entry into the abdomen, the abdm wall was palpated to ensure no adhesions were present

Abdm organs were palpated:

- ✓ Abomasum
- ✓ Small intestines (w/ faecal pellets)
- ✓ Colon
- ✓ Urinary bladder
- ✓ Liver & Gall bladder

After examination, the abdm organs were carefully placed back into the abdomen