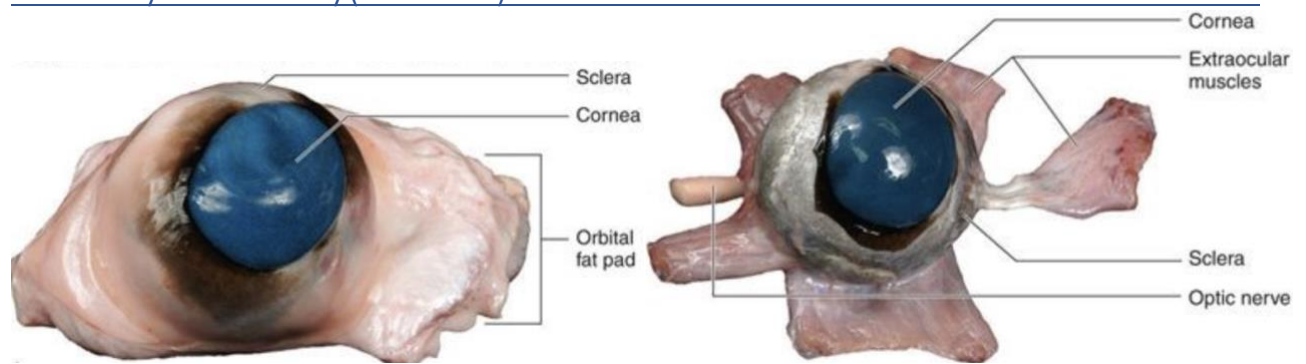
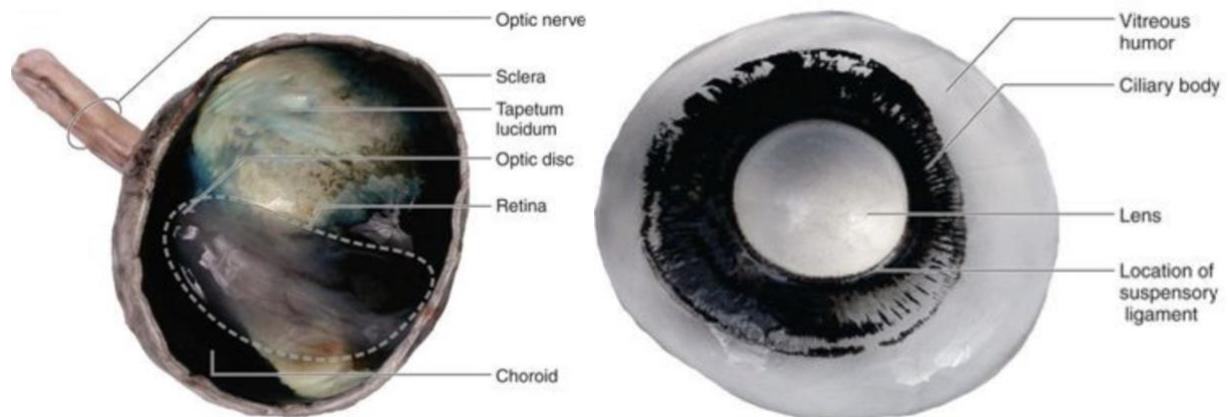


Cattle Eye Anatomy(exterior)



Cattle Eye Anatomy(interior)



ARTERIES - HEAD

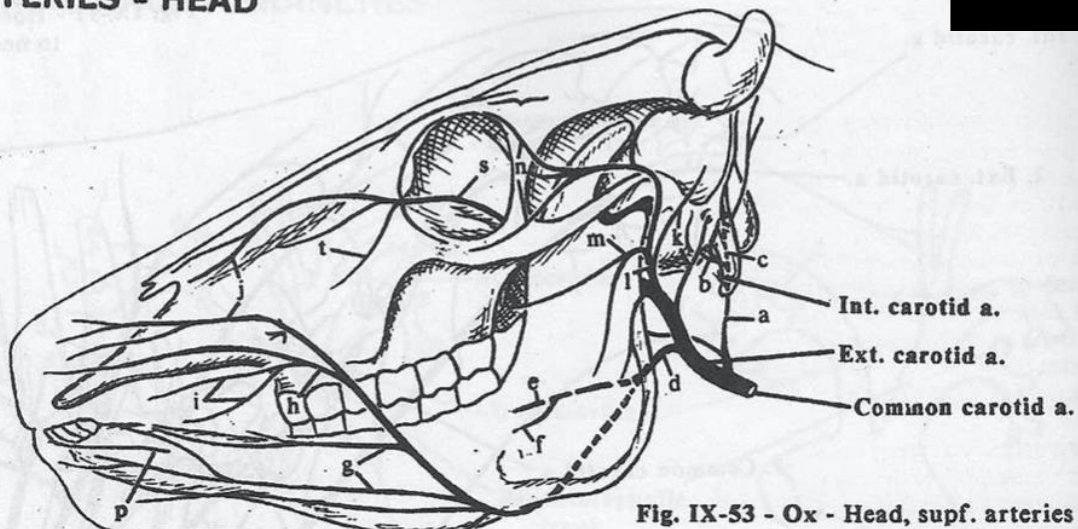


Fig. IX-53 - Ox - Head, supf. arteries - lat. view

Facial a.

Maxillary a.

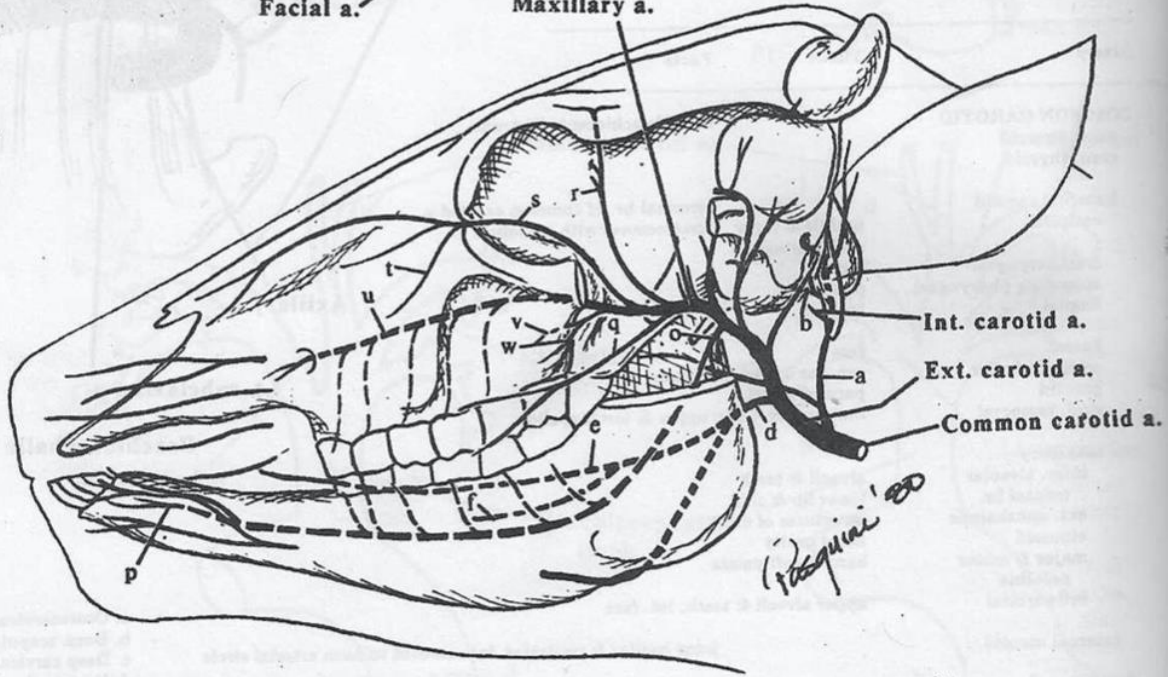


Fig. IX-54 - Ox - Head, deep arteries (ramus of mandible & caud. portion of bony orbit removed) - lat. view

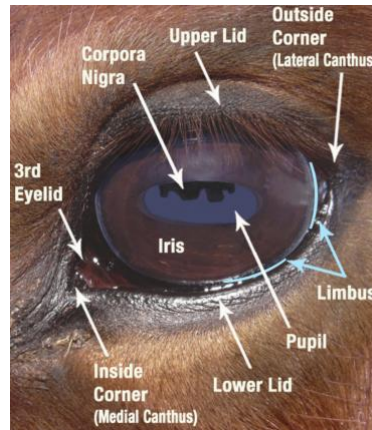
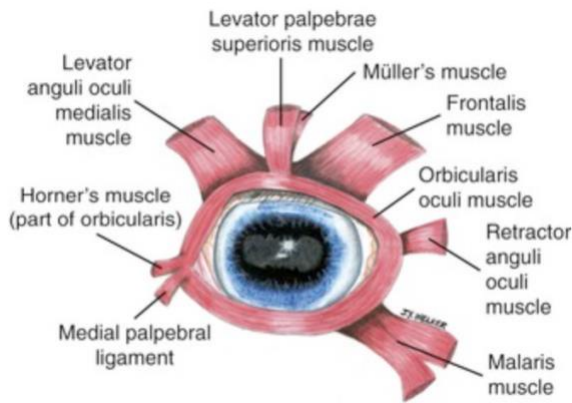
- a. Occipital a.
- b. Middle meningeal a.
- c. Condylar a.
- d. Linguofacial trunk
- e. Lingual a.
- f. Sublingual a.
- g. Inferior labial a.
- h. Supf. labial a.

- i. Angularis oris a.
- j. Nasal aa.
- k. Auricular aa.
- l. Supf. temporal a.
- m. Transverse facial a.
- n. Palpebral aa.
- o. Inferior alveolar a. (IX-55)
- p. Mental a.

- q. Buccal a.
- r. Ext. ophthalmic a.
- s. Malar a.
- t. Angularis oculi a.
- u. Infraorbital a.
- v. Sphenopalatine a.
- w. Palatine aa.

Rasquin 20

Equine Eye Anatomy (exterior and interior)



Vascular Anatomy of the Skull

