

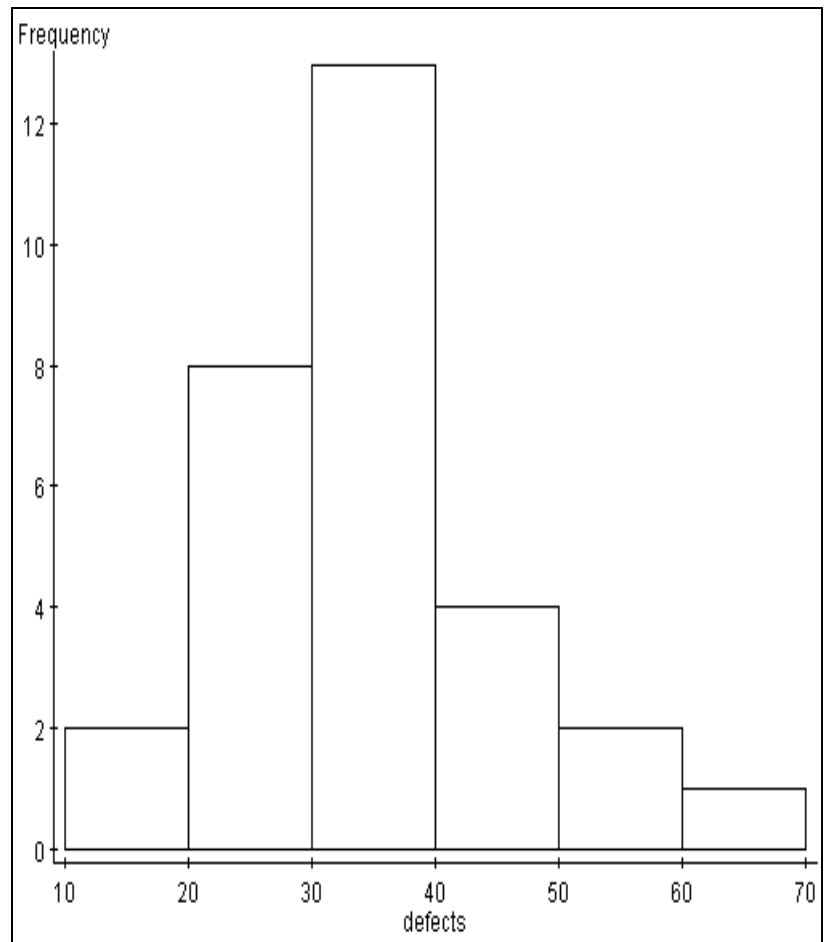
## Stem & Leaf and Histogram of example defects data set

**Variable: defects**

1 : 56  
2 : 12344  
2 : 668  
3 : 01233444  
3 : 56888  
4 : 344  
4 : 5  
5 : 22  
High: 62

Note that the Stem & Leaf has more information than the histogram. The difference in shape is an artifact of the default bin size used in the histogram. If we use the same 'bin size' for the stem and leaf we get

1 : 56  
2 : 12344668  
3 : 0123344456888  
4 : 3445  
5 : 22  
6 : 2



Which now has the same shape as the histogram, but still more information available to us.