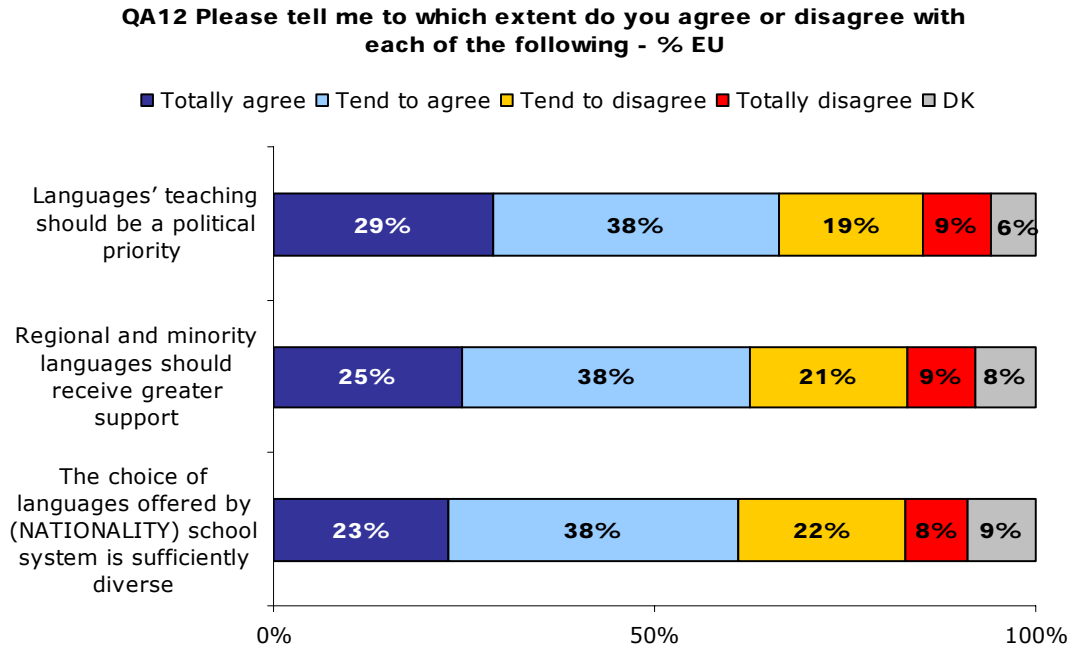


**3.2.2 Policy Implications at the Country Level**

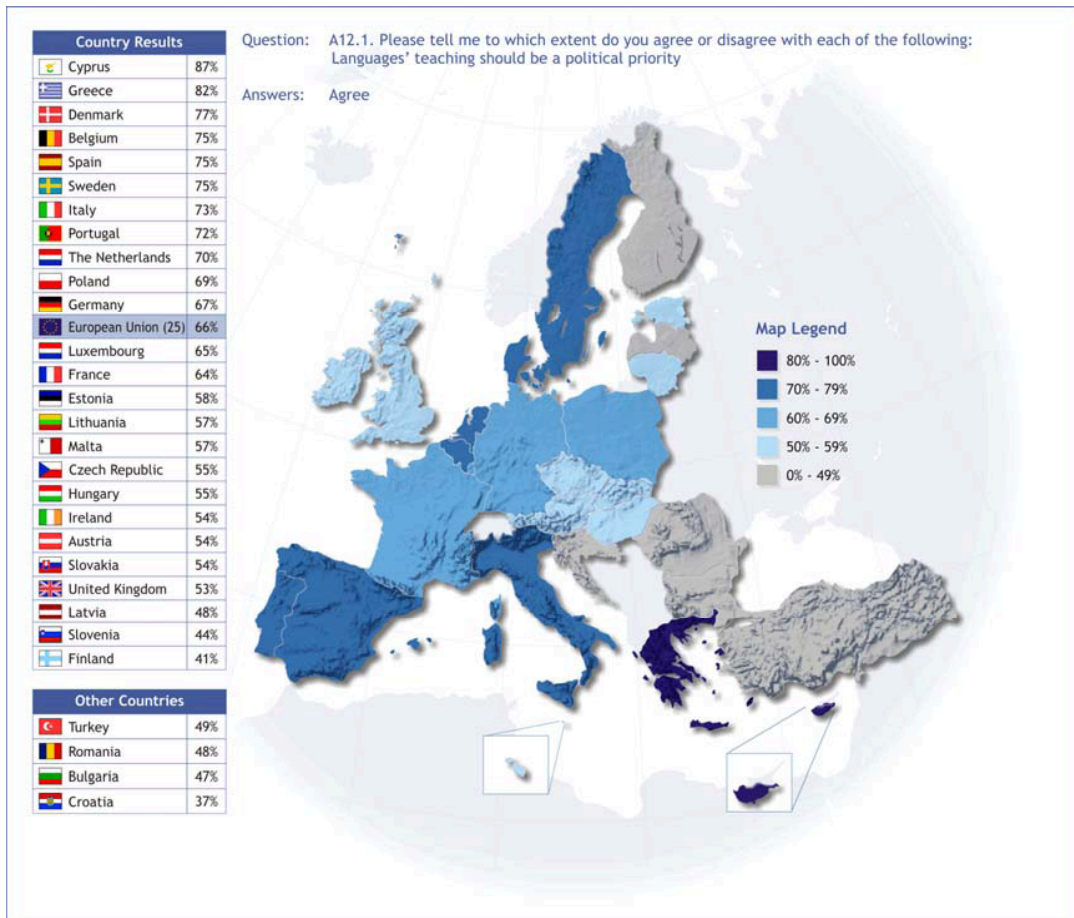
This final chapter analyses the opinions of Europeans concerning some initiatives that could form part of national multilingualism policies.

**- 67% of Europeans would make language teaching a political priority –**



**A reasonable share of EU citizens (67%) agrees with the statement that language's teaching should be a political priority, 29% being entirely in agreement with this view.**

In 26 out of 29 countries polled, the largest proportion of citizens shares this view. 87% of Cypriots, 82% of Greeks and 77% of Danes would accept language teaching as a political priority. Citizens in the candidate country Croatia (55%), Finland (53%) and in Slovenia (49%) are most likely to stand against this view.



The second statement deals with the concern for protecting regional and minority languages in Europe. 63% of the EU citizens think that regional and minority languages should receive greater support, with a quarter of respondents strongly agreeing with this view.

At the country level, differences between those who agree and those who disagree with this view are not distinctive. Nevertheless, **a majority in every single Member State stands for better conditions for regional and minority languages**. The only country polled where those disagreeing with this view outnumber the supporters is the candidate country Turkey.

The countries with the most sympathy for regional and minority languages are Malta (87%), Slovenia (82%) and Cyprus (79%). It could be interpreted here that respondents of relatively small Member States with native languages spoken by a limited number of people seem to understand the importance of preserving linguistic diversity. As a conclusion, **strong support for protecting the linguistic diversity of Europe prevails**.

Finally, the respondents were asked to evaluate the adequacy of the choice of languages offered by their national school systems. **61% of Europeans state that they are satisfied with the present range of languages available at schools in their country**, out of which 23% are totally comfortable with the

current situation. About a third (30%) would like to increase the selection of languages.

Out of 29 countries polled, in 28 countries the majority feel that they have enough choices when it comes to the selection of languages on offer in schools. This is especially the case in Malta (98%), Finland (87%) and Luxembourg (82%). The Turks (47%), Greeks (44%) and Poles (39%) are most in agreement with the viewpoint that the choice of languages is insufficient.

It should be pointed out that **in countries where language skills are widely spread, respondents also seem to be satisfied with the selection of languages offered** whereas, in those countries where a lack of competence in languages can be observed, citizens call for a wider choice of languages in national school systems.

QA12 Please tell me to which extent do you agree or disagree with each of the following.

| % Agree     | Languages' teaching should be a political priority | Regional and minority languages should receive greater support | The choice of languages offered by (NATIONALITY) school system is sufficiently diverse |
|-------------|--|--|--|
| <b>EU25</b> | <b>67%</b>   | <b>63%</b>   | <b>61%</b>   |
| <b>BE</b>   | 75%  | 66%  | 79%  |
| <b>CZ</b>   | 55%  | 55%  | 68%  |
| <b>DK</b>   | 77%  | 56%  | 75%  |
| <b>DE</b>   | 67%  | 55%  | 62%  |
| <b>EE</b>   | 58%  | 77%  | 72%  |
| <b>EL</b>   | 82%  | 73%  | 55%  |
| <b>ES</b>   | 75%  | 65%  | 60%  |
| <b>FR</b>   | 64%  | 59%  | 61%  |
| <b>IE</b>   | 54%  | 65%  | 54%  |
| <b>IT</b>   | 73%  | 75%  | 63%  |
| <b>CY</b>   | 87%  | 79%  | 73%  |
| <b>LV</b>   | 48%  | 72%  | 58%  |
| <b>LT</b>   | 57%  | 74%  | 63%  |
| <b>LU</b>   | 65%  | 68%  | 82%  |
| <b>HU</b>   | 55%  | 58%  | 63%  |
| <b>MT</b>   | 57%  | 87%  | 98%  |
| <b>NL</b>   | 70%  | 39%  | 77%  |
| <b>AT</b>   | 54%  | 69%  | 76%  |
| <b>PL</b>   | 69%  | 65%  | 52%  |
| <b>PT</b>   | 72%  | 76%  | 60%  |
| <b>SI</b>   | 44%  | 82%  | 75%  |
| <b>SK</b>   | 54%  | 42%  | 67%  |
| <b>FI</b>   | 41%  | 74%  | 87%  |
| <b>SE</b>   | 75%  | 61%  | 73%  |
| <b>UK</b>   | 53%  | 64%  | 46%  |
| <b>BG</b>   | 47%  | 30%  | 68%  |
| <b>HR</b>   | 37%  | 56%  | 68%  |
| <b>RO</b>   | 48%  | 42%  | 69%  |
| <b>TR</b>   | 49%  | 48%  | 44%  |

VOLUME A Pondère Weighted

EUROBAROMETER 64.3

Terrain/Fieldwork : 11/2005

QA12.1 Pourriez-vous me dire dans quelle mesure êtes vous d'accord ou pas d'accord avec les affirmations suivantes.

QA12.1 Please tell me to which extent do you agree or disagree with each of the following.

L'enseignement des langues devrait être une priorité politique

Languages' teaching should be a political priority

|      |      | TOTAL | Totally agree | Tend to agree | Tend to disagree | Totally disagree | DK  | Agree | Disagree |
|------|------|-------|---------------|---------------|------------------|------------------|-----|-------|----------|
| UE25 | EU25 | 24682 | 29%           | 38%           | 19%              | 9%               | 6%  | 66%   | 28%      |
| BE   |      | 1000  | 37%           | 38%           | 19%              | 5%               | 1%  | 75%   | 24%      |
| CZ   |      | 1029  | 18%           | 36%           | 30%              | 10%              | 6%  | 55%   | 40%      |
| DK   |      | 1031  | 45%           | 33%           | 12%              | 6%               | 5%  | 77%   | 18%      |
| D-W  |      | 1007  | 30%           | 39%           | 18%              | 10%              | 3%  | 70%   | 27%      |
| DE   |      | 1557  | 29%           | 38%           | 19%              | 12%              | 3%  | 67%   | 30%      |
| D-E  |      | 550   | 22%           | 34%           | 23%              | 19%              | 2%  | 56%   | 41%      |
| EE   |      | 1000  | 27%           | 30%           | 19%              | 12%              | 12% | 58%   | 31%      |
| EL   |      | 1000  | 50%           | 32%           | 12%              | 5%               | 1%  | 82%   | 17%      |
| ES   |      | 1025  | 39%           | 36%           | 10%              | 5%               | 10% | 75%   | 14%      |
| FR   |      | 1012  | 26%           | 38%           | 22%              | 9%               | 5%  | 64%   | 31%      |
| IE   |      | 1000  | 16%           | 38%           | 26%              | 9%               | 10% | 54%   | 36%      |
| IT   |      | 1000  | 32%           | 42%           | 15%              | 6%               | 6%  | 73%   | 21%      |
| CY   |      | 502   | 51%           | 36%           | 6%               | 2%               | 5%  | 87%   | 8%       |
| LV   |      | 1000  | 16%           | 32%           | 26%              | 14%              | 11% | 48%   | 40%      |
| LT   |      | 1011  | 21%           | 36%           | 17%              | 8%               | 18% | 57%   | 25%      |
| LU   |      | 501   | 29%           | 36%           | 16%              | 14%              | 5%  | 65%   | 30%      |
| HU   |      | 1015  | 23%           | 31%           | 16%              | 17%              | 12% | 55%   | 33%      |
| MT   |      | 500   | 29%           | 28%           | 26%              | 10%              | 8%  | 57%   | 36%      |
| NL   |      | 1031  | 26%           | 44%           | 22%              | 4%               | 4%  | 70%   | 26%      |
| AT   |      | 1002  | 20%           | 34%           | 21%              | 17%              | 8%  | 54%   | 38%      |
| PL   |      | 1000  | 30%           | 40%           | 19%              | 4%               | 8%  | 69%   | 23%      |
| PT   |      | 1000  | 29%           | 43%           | 15%              | 5%               | 8%  | 72%   | 20%      |
| SI   |      | 1030  | 13%           | 32%           | 32%              | 17%              | 6%  | 44%   | 49%      |
| SK   |      | 1044  | 20%           | 34%           | 27%              | 14%              | 5%  | 54%   | 41%      |
| FI   |      | 1017  | 11%           | 30%           | 32%              | 20%              | 6%  | 41%   | 53%      |
| SE   |      | 1054  | 39%           | 36%           | 12%              | 9%               | 5%  | 75%   | 20%      |
| UK   |      | 1321  | 19%           | 34%           | 26%              | 14%              | 7%  | 53%   | 40%      |
| BG   |      | 1004  | 19%           | 28%           | 17%              | 15%              | 21% | 47%   | 32%      |
| HR   |      | 1000  | 13%           | 24%           | 27%              | 27%              | 9%  | 37%   | 55%      |
| RO   |      | 1002  | 21%           | 27%           | 17%              | 14%              | 20% | 48%   | 32%      |
| TR   |      | 1005  | 35%           | 14%           | 18%              | 23%              | 11% | 49%   | 41%      |

VOLUME A Pondère Weighted

EUROBAROMETER 64.3

Terrain/Fieldwork : 11/2005

QA12.2 Pourriez-vous me dire dans quelle mesure êtes vous d'accord ou pas d'accord avec les affirmations suivantes.

QA12.2 Please tell me to which extent do you agree or disagree with each of the following.

Le choix de langues proposées dans le système éducatif en (NOTRE PAYS) est suffisamment varié

The choice of languages offered by (NATIONALITY) school system is sufficiently diverse

|      |      | TOTAL | Totally agree | Tend to agree | Tend to disagree | Totally disagree | DK  | Agree | Disagree |
|------|------|-------|---------------|---------------|------------------|------------------|-----|-------|----------|
| UE25 | EU25 | 24682 | 23%           | 38%           | 22%              | 8%               | 9%  | 61%   | 30%      |
| BE   |      | 1000  | 34%           | 45%           | 14%              | 5%               | 2%  | 79%   | 19%      |
| CZ   |      | 1029  | 17%           | 50%           | 20%              | 4%               | 9%  | 68%   | 24%      |
| DK   |      | 1031  | 41%           | 35%           | 17%              | 3%               | 5%  | 75%   | 19%      |
| D-W  |      | 1007  | 30%           | 33%           | 23%              | 10%              | 5%  | 62%   | 33%      |
| DE   |      | 1557  | 29%           | 33%           | 23%              | 10%              | 5%  | 62%   | 33%      |
| D-E  |      | 550   | 24%           | 37%           | 24%              | 9%               | 5%  | 61%   | 33%      |
| EE   |      | 1000  | 35%           | 37%           | 16%              | 3%               | 9%  | 72%   | 19%      |
| EL   |      | 1000  | 23%           | 32%           | 27%              | 17%              | 1%  | 55%   | 44%      |
| ES   |      | 1025  | 21%           | 39%           | 17%              | 7%               | 15% | 60%   | 24%      |
| FR   |      | 1012  | 19%           | 42%           | 25%              | 9%               | 5%  | 61%   | 34%      |
| IE   |      | 1000  | 13%           | 41%           | 24%              | 7%               | 15% | 54%   | 31%      |
| IT   |      | 1000  | 20%           | 43%           | 22%              | 6%               | 9%  | 63%   | 28%      |
| CY   |      | 502   | 39%           | 34%           | 16%              | 4%               | 7%  | 73%   | 20%      |
| LV   |      | 1000  | 18%           | 40%           | 25%              | 5%               | 12% | 58%   | 29%      |
| LT   |      | 1011  | 25%           | 38%           | 21%              | 3%               | 13% | 63%   | 24%      |
| LU   |      | 501   | 53%           | 29%           | 9%               | 3%               | 6%  | 82%   | 12%      |
| HU   |      | 1015  | 26%           | 37%           | 19%              | 6%               | 12% | 63%   | 24%      |
| MT   |      | 500   | 68%           | 30%           | 0%               | -                | 2%  | 98%   | 0%       |
| NL   |      | 1031  | 42%           | 35%           | 15%              | 3%               | 5%  | 77%   | 18%      |
| AT   |      | 1002  | 30%           | 46%           | 12%              | 2%               | 10% | 76%   | 14%      |
| PL   |      | 1000  | 16%           | 37%           | 31%              | 9%               | 8%  | 52%   | 39%      |
| PT   |      | 1000  | 20%           | 39%           | 23%              | 5%               | 12% | 60%   | 28%      |
| SI   |      | 1030  | 27%           | 48%           | 15%              | 3%               | 6%  | 75%   | 19%      |
| SK   |      | 1044  | 18%           | 50%           | 23%              | 4%               | 6%  | 67%   | 27%      |
| FI   |      | 1017  | 52%           | 36%           | 9%               | 2%               | 2%  | 87%   | 11%      |
| SE   |      | 1054  | 42%           | 31%           | 11%              | 5%               | 11% | 73%   | 16%      |
| UK   |      | 1321  | 13%           | 34%           | 25%              | 9%               | 19% | 46%   | 34%      |
| BG   |      | 1004  | 30%           | 38%           | 12%              | 2%               | 17% | 68%   | 15%      |
| HR   |      | 1000  | 22%           | 46%           | 17%              | 5%               | 10% | 68%   | 23%      |
| RO   |      | 1002  | 33%           | 36%           | 11%              | 3%               | 16% | 69%   | 14%      |
| TR   |      | 1005  | 22%           | 21%           | 23%              | 24%              | 9%  | 44%   | 47%      |

VOLUME A Pondère Weighted

EUROBAROMETER 64.3

Terrain/Fieldwork : 11/2005

QA12.3 Pourriez-vous me dire dans quelle mesure êtes vous d'accord ou pas d'accord avec les affirmations suivantes.

QA12.3 Please tell me to which extent do you agree or disagree with each of the following.

Les langues régionales et minoritaires devraient recevoir un soutien plus important

Regional and minority languages should receive greater support

|           | TOTAL | Totally agree | Tend to agree | Tend to disagree | Totally disagree | DK  | Agree | Disagree |
|-----------|-------|---------------|---------------|------------------|------------------|-----|-------|----------|
| UE25 EU25 | 24682 | 25%           | 38%           | 21%              | 9%               | 8%  | 63%   | 29%      |
| BE        | 1000  | 23%           | 43%           | 27%              | 6%               | 1%  | 66%   | 33%      |
| CZ        | 1029  | 14%           | 42%           | 30%              | 8%               | 6%  | 55%   | 38%      |
| DK        | 1031  | 24%           | 32%           | 29%              | 8%               | 7%  | 56%   | 37%      |
| D-W       | 1007  | 24%           | 31%           | 27%              | 13%              | 4%  | 55%   | 40%      |
| DE        | 1557  | 23%           | 33%           | 26%              | 14%              | 4%  | 55%   | 40%      |
| D-E       | 550   | 18%           | 38%           | 24%              | 18%              | 3%  | 56%   | 42%      |
| EE        | 1000  | 41%           | 35%           | 10%              | 3%               | 11% | 77%   | 13%      |
| EL        | 1000  | 38%           | 35%           | 17%              | 8%               | 2%  | 73%   | 25%      |
| ES        | 1025  | 31%           | 34%           | 15%              | 8%               | 12% | 65%   | 24%      |
| FR        | 1012  | 23%           | 36%           | 23%              | 13%              | 5%  | 59%   | 35%      |
| IE        | 1000  | 21%           | 44%           | 16%              | 4%               | 15% | 65%   | 19%      |
| IT        | 1000  | 31%           | 44%           | 16%              | 4%               | 5%  | 75%   | 20%      |
| CY        | 502   | 47%           | 32%           | 9%               | 2%               | 10% | 79%   | 11%      |
| LV        | 1000  | 27%           | 45%           | 14%              | 4%               | 10% | 72%   | 18%      |
| LT        | 1011  | 31%           | 43%           | 13%              | 3%               | 10% | 74%   | 16%      |
| LU        | 501   | 32%           | 35%           | 18%              | 7%               | 7%  | 68%   | 25%      |
| HU        | 1015  | 26%           | 32%           | 21%              | 8%               | 13% | 58%   | 29%      |
| MT        | 500   | 53%           | 33%           | 6%               | 1%               | 7%  | 87%   | 6%       |
| NL        | 1031  | 12%           | 27%           | 41%              | 16%              | 4%  | 39%   | 57%      |
| AT        | 1002  | 33%           | 36%           | 15%              | 5%               | 11% | 69%   | 20%      |
| PL        | 1000  | 23%           | 42%           | 18%              | 3%               | 14% | 65%   | 21%      |
| PT        | 1000  | 25%           | 50%           | 9%               | 2%               | 13% | 76%   | 12%      |
| SI        | 1030  | 30%           | 52%           | 11%              | 2%               | 5%  | 82%   | 13%      |
| SK        | 1044  | 11%           | 31%           | 37%              | 14%              | 8%  | 42%   | 50%      |
| FI        | 1017  | 30%           | 44%           | 17%              | 5%               | 5%  | 74%   | 21%      |
| SE        | 1054  | 30%           | 31%           | 19%              | 8%               | 11% | 61%   | 28%      |
| UK        | 1321  | 19%           | 45%           | 18%              | 8%               | 11% | 64%   | 26%      |
| BG        | 1004  | 11%           | 20%           | 26%              | 23%              | 21% | 30%   | 49%      |
| HR        | 1000  | 18%           | 38%           | 23%              | 9%               | 13% | 56%   | 31%      |
| RO        | 1002  | 19%           | 24%           | 20%              | 15%              | 23% | 42%   | 35%      |
| TR        | 1005  | 30%           | 18%           | 20%              | 23%              | 9%  | 48%   | 43%      |