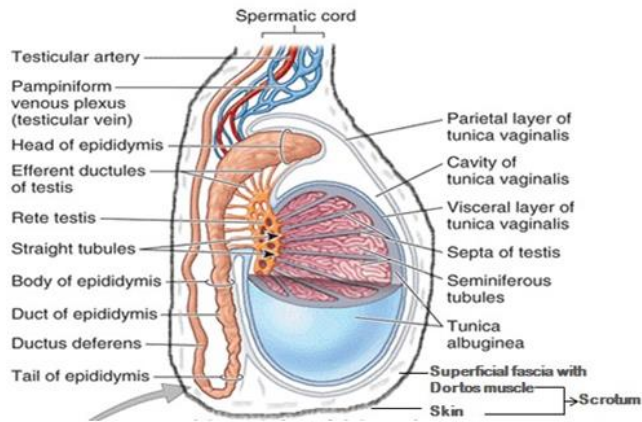
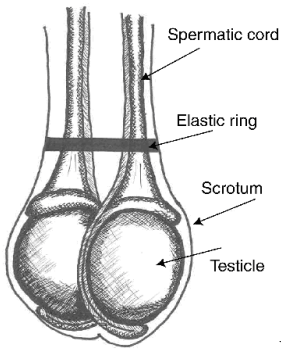


Anatomy

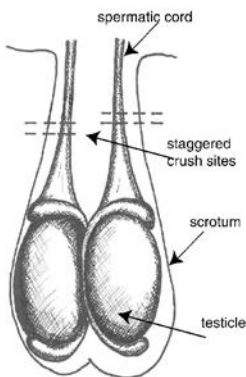


MAJOR BLOOD VESSELS AND INNERVATIONS OF THE TESTES	MAJOR BLOOD VESSELS AND INNOVATION OF THE SCROTUM
1. Testicular arteries	1. External pudendal arteries
2. Testicular veins (Pampiniform plexus)	2. Internal pudendal arteries
	3. External pudendal veins
	4. Internal pudendal veins

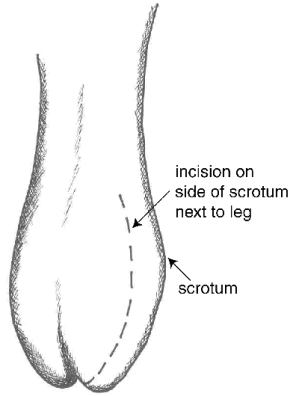
General anatomy of the testes



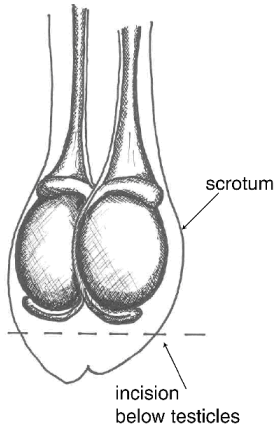
Performing the Elastic Band Castration



Performing the Burdizzo Emasculator Castration



Performing the incision method A (vertical) for the surgical procedure.



Performing the incision method B (horizontal) for the surgical procedure.