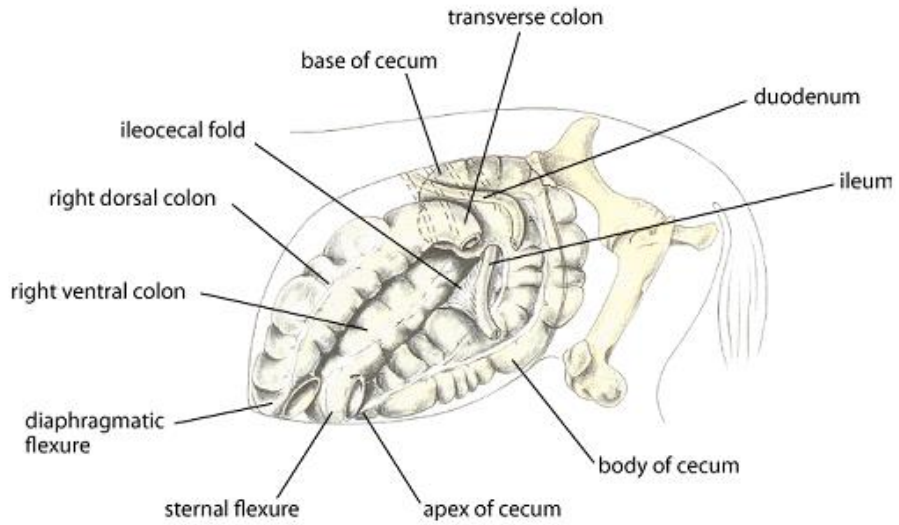


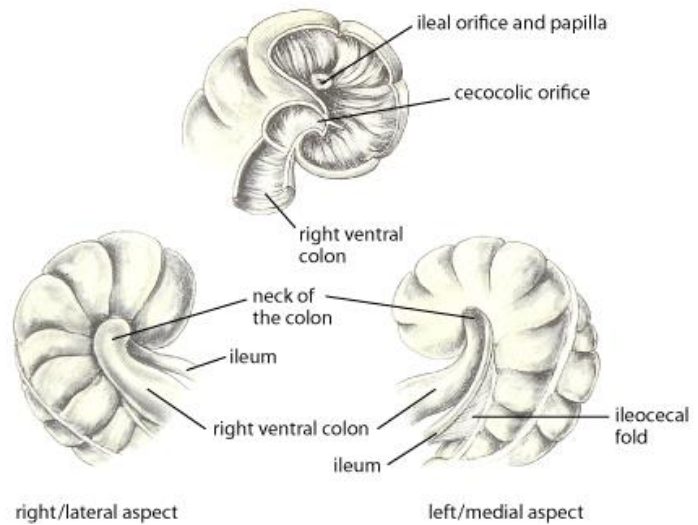
Cecum and right colon, horse

Left medial view of cecum and right colon, horse. Illustration by Dr. Gheorghe Constantinescu.



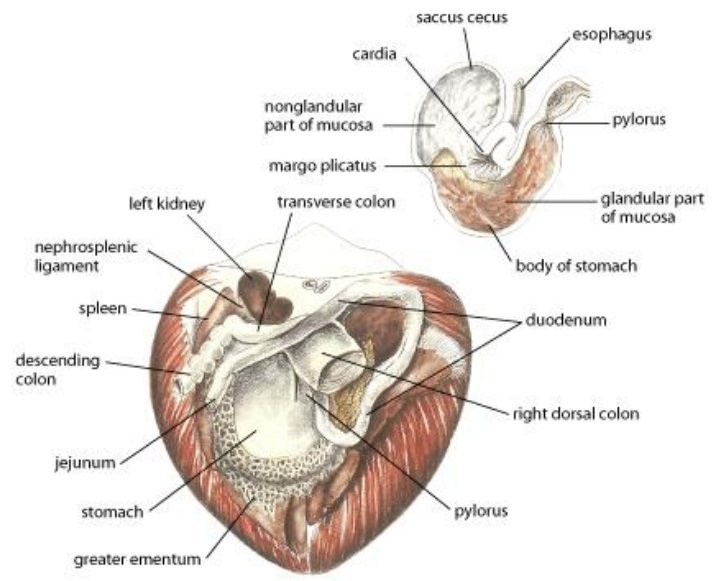
Base of cecum, horse

Base of the cecum in the horse. Illustration by Dr. Gheorghe Constantinescu.



Equine gastrointestinal anatomy

Equine GI anatomy relevant to colic, median section. Illustration by Dr. Gheorghe Constantinescu.



Large intestine, horse

The large intestine of the horse. Illustration by Dr. Gheorghe Constantinescu.

