



## THE FEMORAL NERVE

- Passes through the psoas muscles and out of the abdominal cavity
- Courses through the femoral canal where it heads to the quadriceps femoris m.

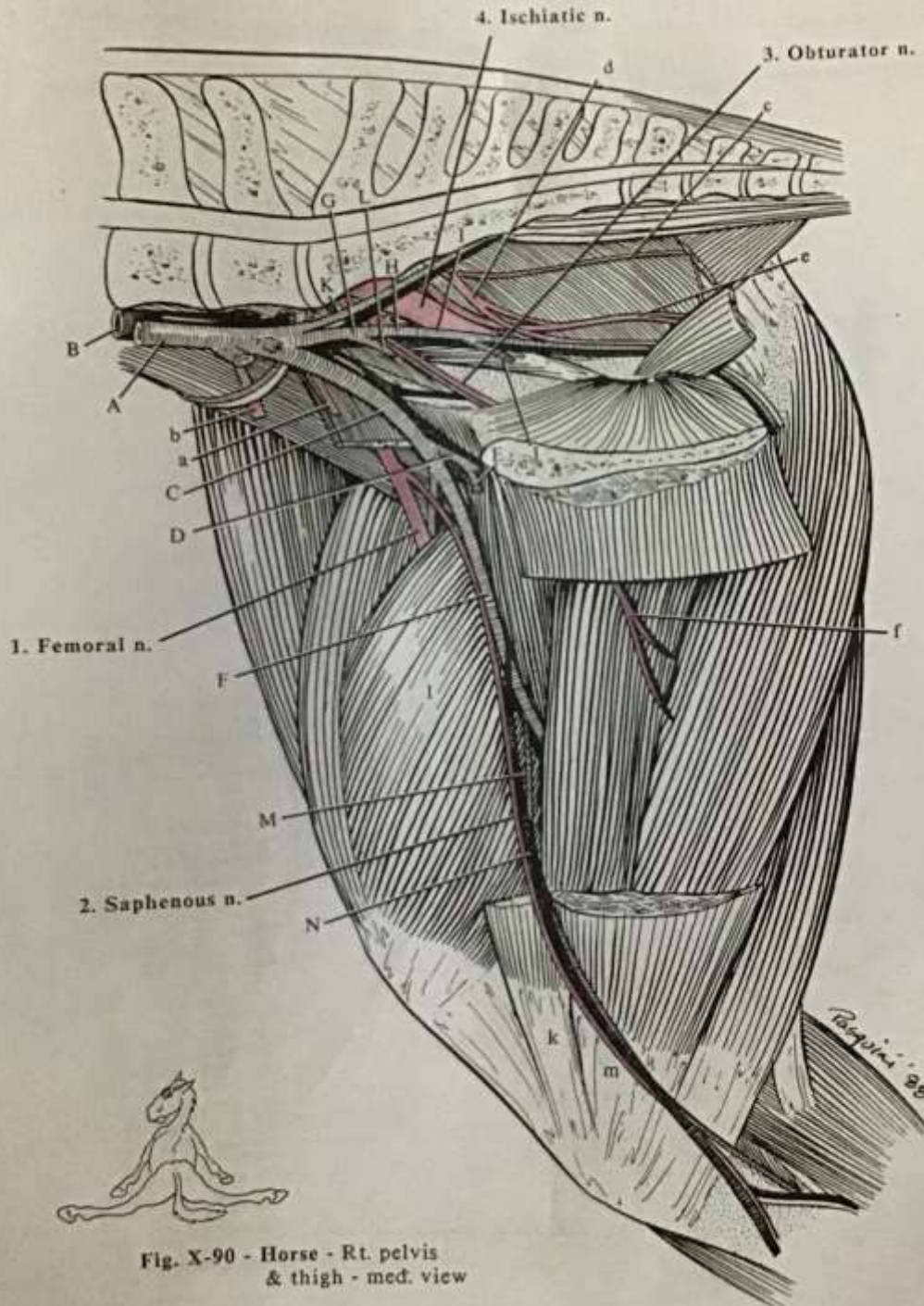


Fig. X-90 - Horse - Rt. pelvis  
& thigh - med. view

a- **Lateral cutaneous femoral n.**

b- Genitofemoral n.

c- Caudal gluteal n.

d- Pudendal n.

e- **Caudal cutaneous femoral n.**

f- Branch of Obturator n.

k- **Sartorius m.**

m- Gracillis m.

# BRANCHES OF THE FEMORAL NERVE

- The femoral nerve itself gives motor innervation to the quadriceps femoris m and the iliopsoas muscles.
- Saphenous nerve:
  - Gives sensory innervation to the skin of the medial & cranial surface of the thigh and leg from the stifle to the metatarsus
  - Give motor innervation to the sartorius m.
  - Terminates at the quadriceps femoris m.
- Lateral Cutaneous Femoral nerve:
  - Gives sensory innervation to the skin of the craniomedial thigh & cranial stifle
  - Give motor innervation the psoas major m.
- Caudal cutaneous femoral:
  - Gives sensory innervation to the caudal aspect of the thigh