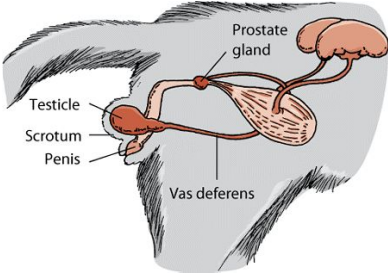
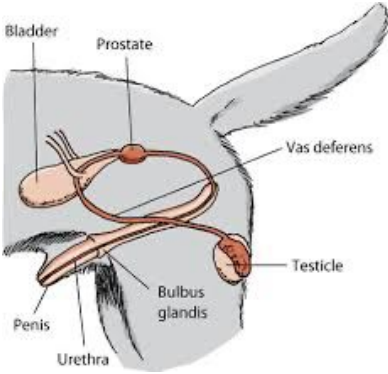
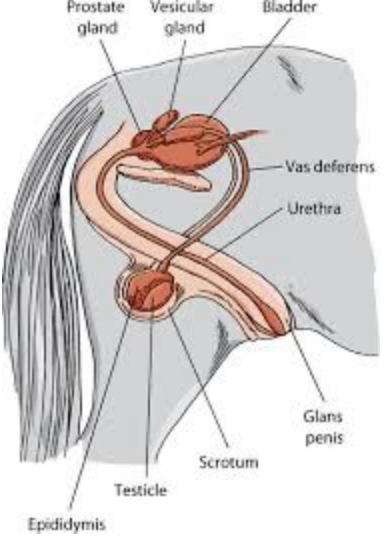
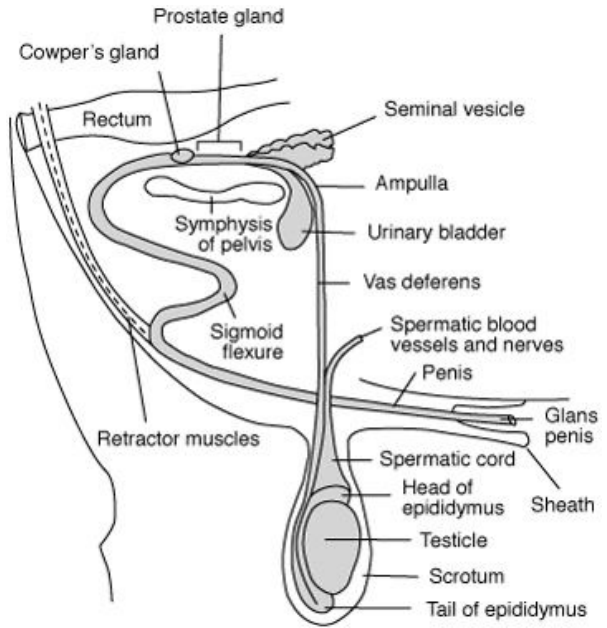
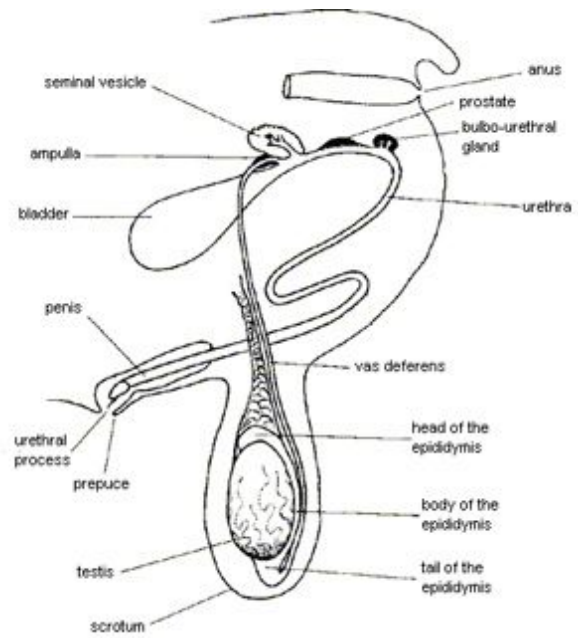


Species	Male
<p>Feline</p>	 <p>Prostate gland Testicle Scrotum Penis Vas deferens</p>
<p>Canine</p>	 <p>Bladder Prostate Vas deferens Testicle Bulbus glandis Penis Urethra</p>
<p>Equine</p>	 <p>Prostate gland Vesicular gland Bladder Vas deferens Urethra Glans penis Scrotum Testicle Epididymis</p>

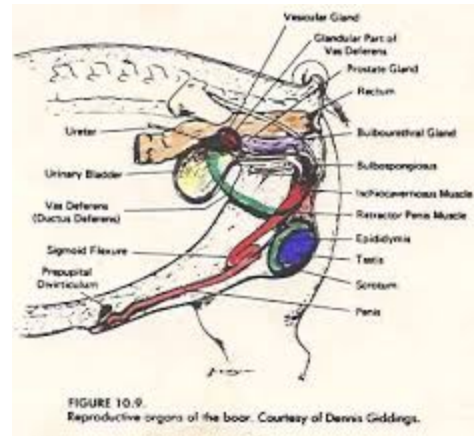
Bovine



Ovine & Caprine



Swine



<https://www.merckvetmanual.com/cat-owners/reproductive-disorders-of-cats/the-gonads-and-genital-tract-of-cats>

<https://www.merckvetmanual.com/dog-owners/reproductive-disorders-of-dogs/the-gonads-and-genital-tract-of-dogs>

<https://www.merckvetmanual.com/horse-owners/reproductive-disorders-of-horses/the-gonads-and-genital-tract-of-horses>

<https://extension.missouri.edu/publications/g2016>

<http://www.luresext.edu/?q=content/goat-reproductive-biology>

http://www.ansci.wisc.edu/jjp1/pig_case/html/library/boara&p.pdf