

Anatomy of the Eye and surrounding structures

Important to note structures:

- Structure of the eye
- The bony structures surrounding the eye
- The nerves surrounding the eye and nerve supply to the eye
- The blood vessels to and surrounding the eye

Why do we need to know this?

- To understand where the landmarks for procedures such as nerve blocks are
- To understand what other structures will be affected

1. Structure of the Eye

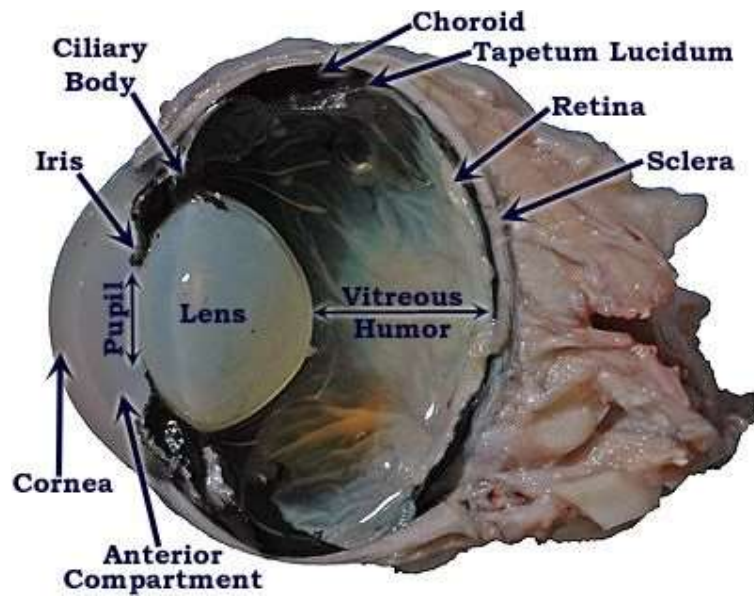


Image 1, anatomy of a bovine eye

2. The bony structures surrounding the eye

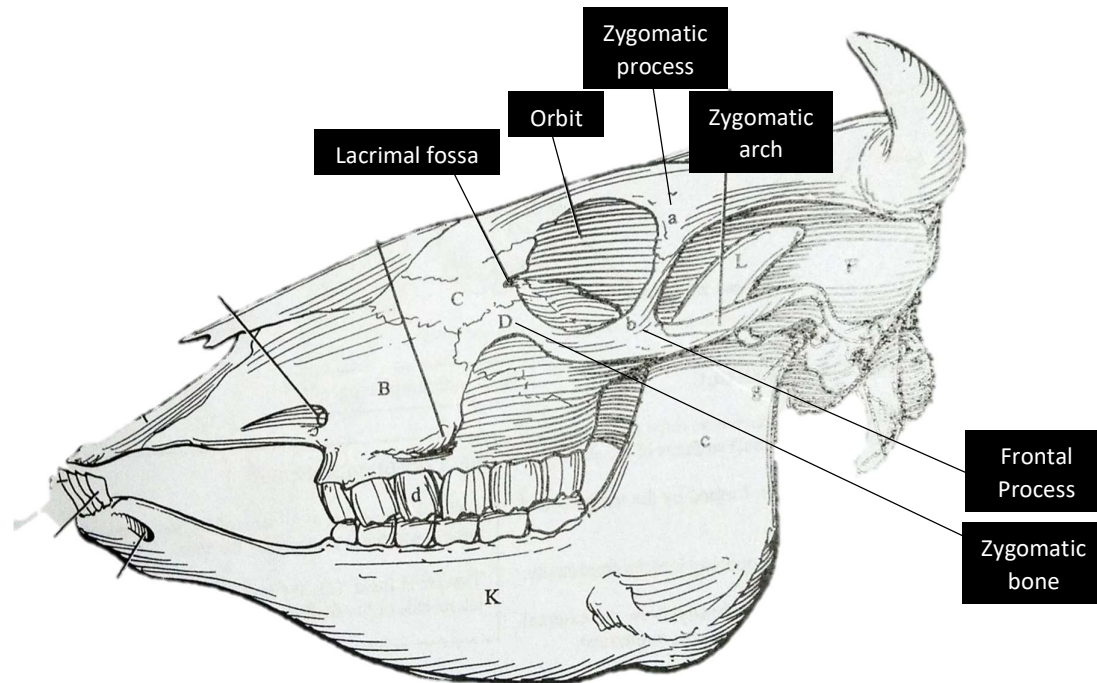
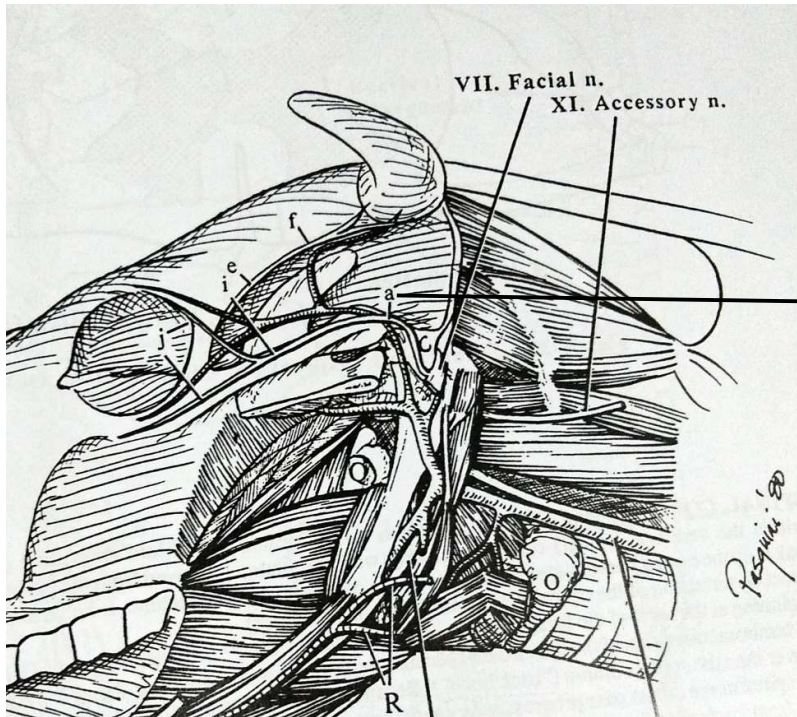


Image 2, anatomy of the skull with respect to areas of importance with respect to surgical treatment of eye disorders

3. The nerves surrounding the eye and nerve supply to the eye



Auricular palpebral nerve

E: zygomaticotemporal nerve
F: cornual nerve
I: zygomatic branch of the auricular palpebral nerve
J: palpebral branch of the zygomatic branch

Image 3, anatomy of the nerves of importance in the surgical approach to eye disorders

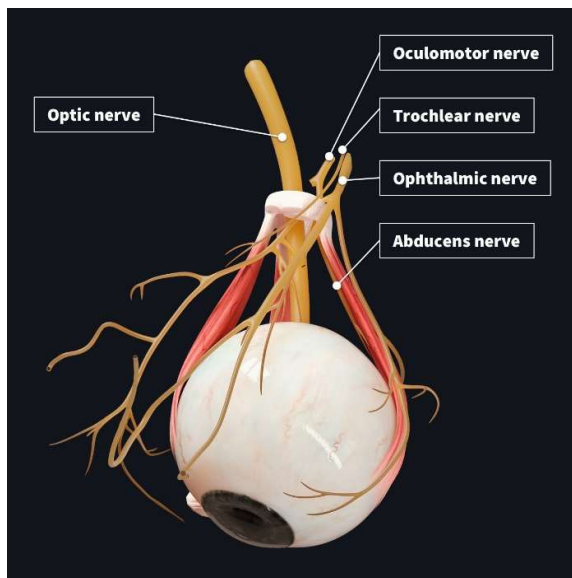


Image 4, nerves which innervate the eye