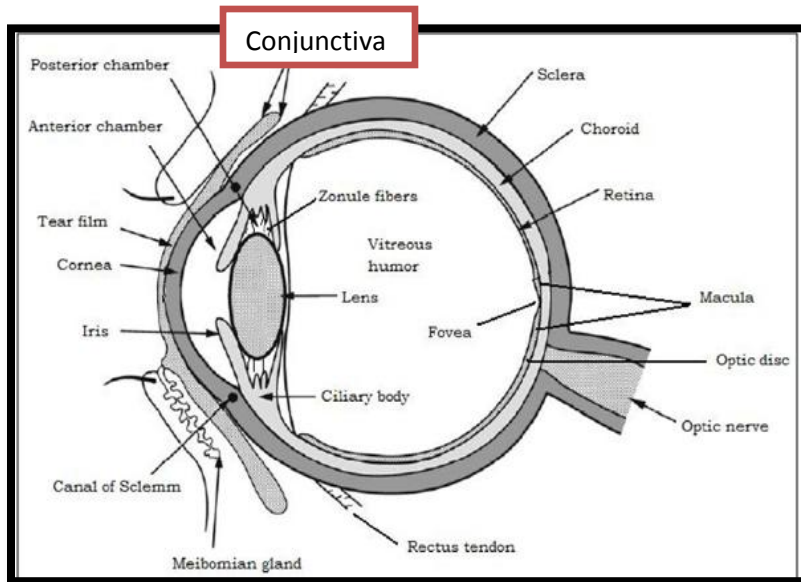


Sub-conjunctival Injection

Indications:

- ✓ Used when a high level of medication is needed in the eye (cornea & anterior chamber)
- ✓ Placing medication in the sub-conjunctiva → bypass lipid layers of bulbar conjunctiva → drugs placed adjacent to water permeable sclera therefore increasing water soluble drug penetration into the eye



Procedure:

1. Sensation to the eye ball is blocked by 4 point retro-bulbar block or Peterson nerve block.
2. Let the assistant pull the animals ear towards them (away from you), and push the nose towards you. This allows for ventral rotation of the eyeball, so the dorsal conjunctiva can be accessed.
3. Using a small needle (25;27 or 30 gauge needles can be used), place the needle positioned tangent to the globe → touch the conjunctiva → make a tiny superficial stab into the conjunctiva
4. Administer the medication (will see a bleb formed on the conjunctiva).
5. When taking the needle out, gently twist the needle to close the 'wound' made by the needle

Guidelines for sub-conjunctival injections:

- ✓ Inject under bulbar conjunctiva (do not use intra-palpebral)
- ✓ Inject vol. <1ml, using water soluble Parenteral preparations.
- ✓ Ensure medication is safe to use on the conjunctiva (eg NSAIDs not suitable)
- ✓ Repeated injections can cause local trauma, so cannot be continued indefinitely