



**REQUIREMENTS FOR  
PERFORMING NERVE BLOCKS**

## ❖ Knowledge of the relevant anatomical landmarks

- Notch formed by the **caudal border of the orbital rim** and the **zygomatic arch** (indicated by the black arrow)
- Location of the **coronoid process of the mandible**



Image source: <https://www-vetstream-com.ezproxy.sastudents.uwi.tt/Vetstream/media/images/Bovis/Peterson-block-approach.jpg>



## Nerves of the head of regional importance

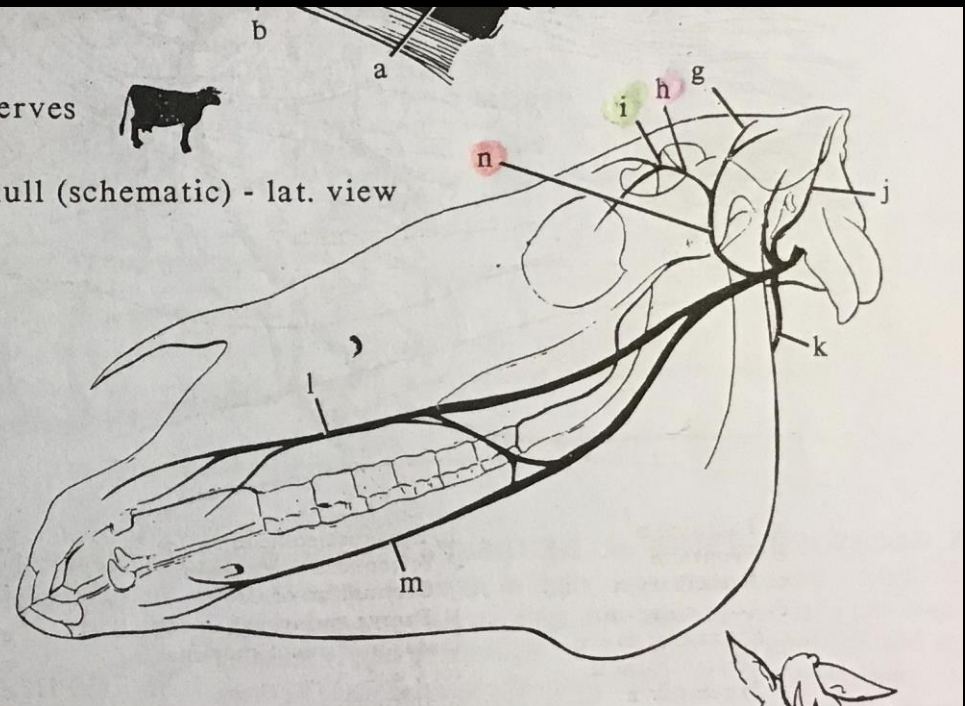
- Auriculopalpebral nerve
- Palpebral nerve

Fig. X-25 - Ox - Supf. vessels, 7 nerves  
of head - lat. view



Fig. X-26 - Horse - Skull (schematic) - lat. view

- a. Ext. jugular v.
- b. Linguofacial v.
- c. Parotid salivary gl.
- d. Mandibular salivary gl.
- e. Parotid duct
- f. Masseter m.
- g. Rostr. auricular n. (VII)
- h. Zygomatic br. (VII)
- i. Palpebral br. (VII)
- j. Caud. auricular n. (VII)
- k. Digastric br. (VII)
- l. Dors. buccal br. (VII)
- m. Ventr. buccal br. (VII)
- n. Auriculopalpebral n. (VII)



- ❖ **Lidocaine 2%**
- ❖ **Needles of different sizes**
  - Peterson NB: 1 inch 23 G, 1 inch 14 G and 6 inch 18 G
  - Auriculopalpebral: 21G 2.5 cm
  - Retrobulbar: 19 G spinal needle
- ❖ **20 mL syringe**
- ❖ **Proper head restraint**
  - Physical: halter + rope + assistant(s)
  - Chemical: xylazine + ketamine for sedation
- ❖ **Cleaning the area on and around the zygomatic arch**
  - Chlorhexidine
  - Shave the area if necessary

## ❖ Desensitization of the skin

- Inject 5ml Lidocaine 2% subcutaneously
- Wait 5-10 minutes to allow desensitization of the skin